



# THE AETNA SPRINGS COMMUNITY

Explore our extensive range of  
beautiful home designs.

[GreencityHomes.us](https://GreencityHomes.us)



# THE AETNA SPRINGS COMMUNITY

Explore our extensive range of  
beautiful home designs.

[GreencityHomes.us](http://GreencityHomes.us)







# The Greencity Way

## Community

We strive to create beautiful neighborhoods that you love to come home to! We will have an HOA management company which will work for you by keeping the grounds maintained and enforcing a few rules that will keep everyone's properties looking nice thus protecting every owner's property values. High speed internet is also included in your HOA dues, making it one less bill for you to pay each month. Our HOA management company is Roland Management, a small family owned company local to Spartanburg which offers exceptional service and convenience in making payments.

## Oasis

Tucked back off Clark Road with a long beautifully landscaped front entrance that has been intentionally designed to create the feeling of entering into a Luxurious Oasis, we have meticulously plan every detail of your living experience.

## Functionality

Customize what is important to you and design the functional home of your dreams.

Choose from seven modern floor-plans, and pick your exterior and interior colors.

Multiple flooring choices with luxury vinyl plank in four colors with options to upgrade to high quality laminate plank or hardwood.

Design your kitchen, choose your cabinets, quartz counter tops, and backsplash tiles to create your dream kitchen.

Sleek, modern hardware and lighting fixtures with a choice of matte black or brushed gold.

Ceramic tile bathroom floors with multiple styles, colors and sizes of tiles to choose from. Customize your primary bathroom shower with several tile colors, sizes and styles. Upgrade with benches, niches and a curbless shower.

Covered back porches give you a functional indoor outdoor living space.

Luxurious upgrades available from towel warmers to waterfall islands and even outdoor kitchens!



## About this Community.

The Aetna Springs project offers a unique oasis experience while remaining connected to surrounding hotspots of food, entertainment, parks, and even an international airport. Between the city of Taylors, Greer, & Greenville, you will surely find the lifestyle you seek.

Aetna Springs is conveniently located near the vibrant city of Greenville. A warm, inviting, down-to-earth place with waterfalls at the heart of the city, mountain views, with award winning restaurants, shopping, and much more.

We built a community in the perfect location for an assortment of outdoor experiences such as parks, bike trails, lakes, and hikes.

From Lake Jocassee, Lake Keowee, Chimney Rock Trail, and much more you will be sure to enjoy all Greenville has to offer, not to mention over 250 days of expected sunshine per-year!







Lilac

Lot 1 3357sqft | 3 beds | 2 baths | 2 cars



Rosemary

Lot 2 3208sqft | 4 beds | 3.5 baths | 2 cars



Hampton

Lot 3 3,055sqft | 5 beds | 3.55 baths | 2 cars



Pellum

Lot 4 3306sqft | 4 beds | 4.5 baths | 2 cars



Springfield

Lot 5 3361sqft | 4 beds | 4 baths | 2 cars



Flynn

Lot 6 3267sqft | 3 beds | 2.5 baths | 2 cars



Hollie

Lot 7 3290sqft | 4 beds | 3.5 baths | 2 cars



Springfield

Lot 8 3361sqft | 4 beds | 4 baths | 2 cars

## Choose your model home.

Greencity Homes we've been building quality custom and model homes for 15 years.

With our build quality and extensive range of home designs, you are sure to find the perfect home to suit your lifestyle.

Speak to one of our helpful consultants for advice and pricing and customization options for your new home.



# Choose your model home.

Greencity Homes we've been building quality custom and model homes for 15 years.

With our build quality and extensive range of home designs, you are sure to find the perfect home to suit your lifestyle.

Speak to one of our helpful consultants for advice and pricing and customization options for your new home.



Willow

Lot 9 3161sqft | 3 beds | 2 baths | 3 cars



Pellum

Lot 10 3654sqft | 4 beds | 4.5 baths | 2 cars



Athens

Lot 11 4129sqft | 4 beds | 4.5 baths | 2 cars



Pearl

Lot 12 3350sqft | 4 beds | 3.5 baths | 2 cars



Jane

Lot 13 3323sqft | 5 beds | 4.5 baths | 2 cars



Nordic

Lot 14 3242sqft | 5 beds | 5.5 baths | 2 cars



Jill

Lot 15 3594 sqft | 3 beds | 2.5 baths | 2 cars



Jack

Lot 16 2654sqft | 4 beds | 3.5 baths | 2 cars

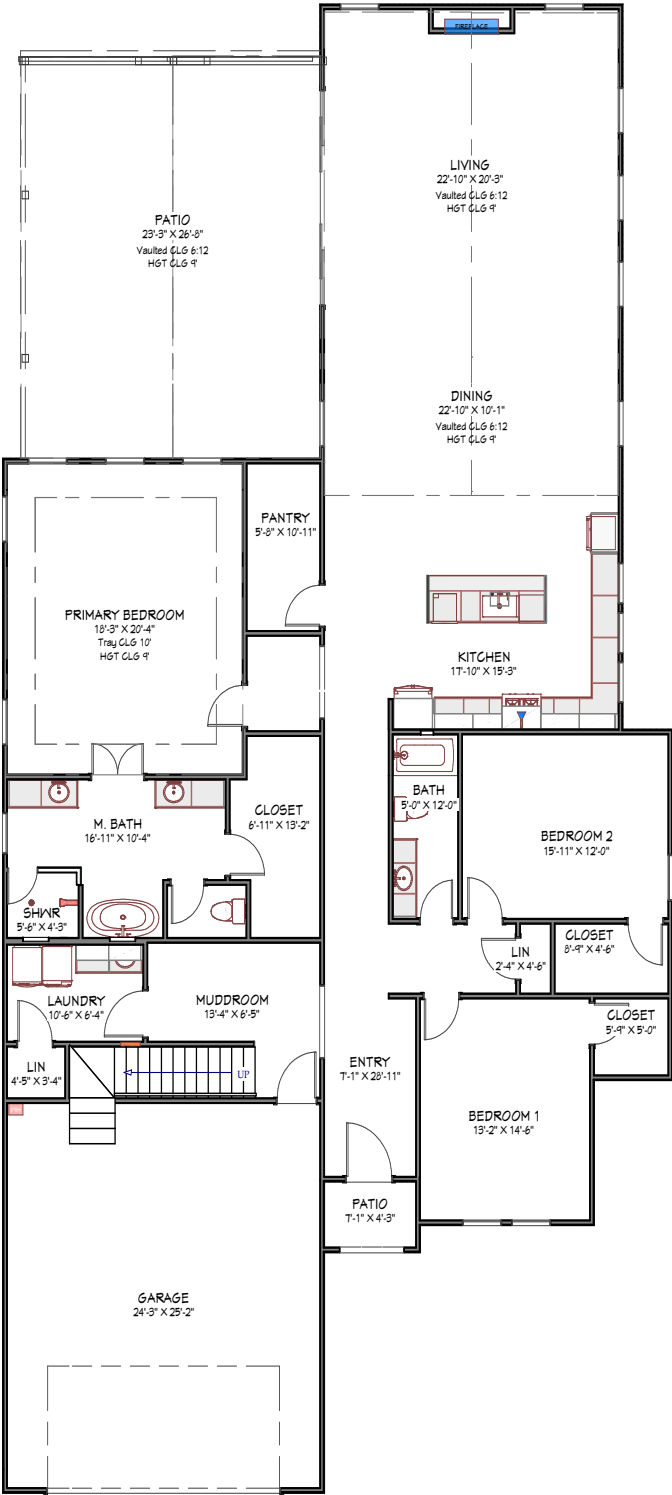
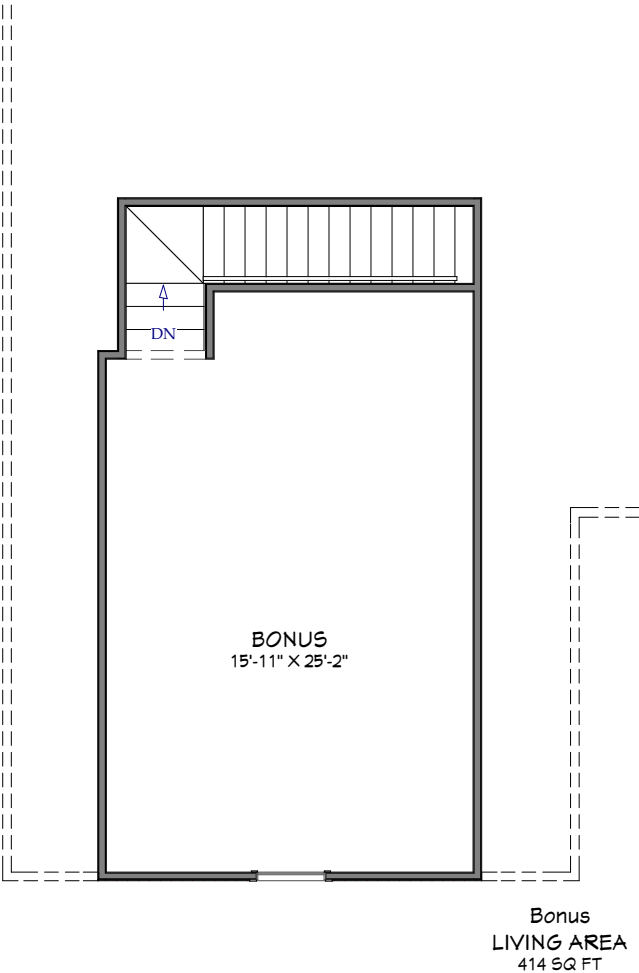




# Lot 1 (Lilac)

3357<sub>SF</sub>

3 | 2 | 2



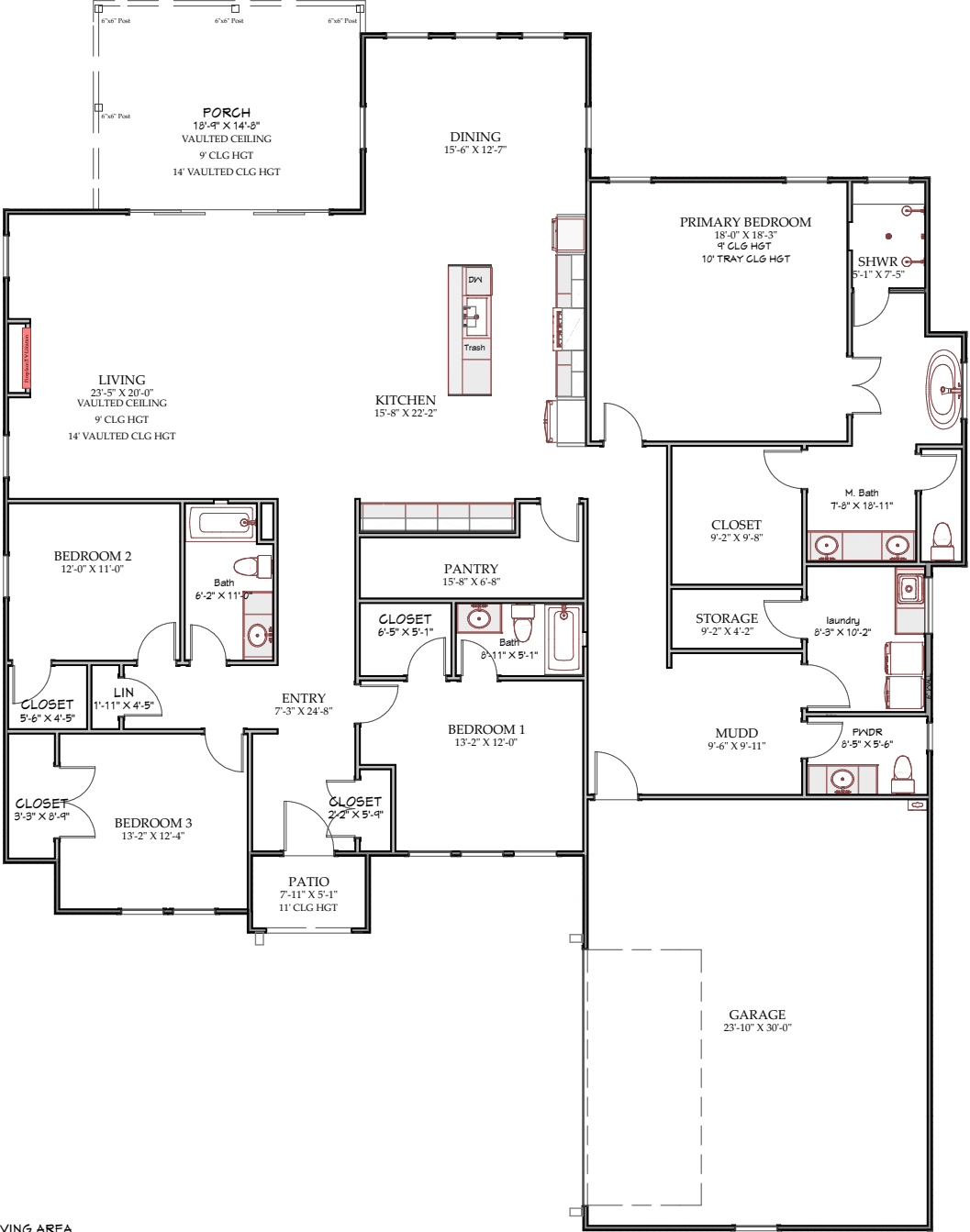
1ST FLOOR  
LIVING AREA  
2443 SQ FT



# Lot 2 (Rosemary)

3,208<sub>SF</sub>

4 | 3.5 | 2



LIVING AREA  
3208 SQ. FT.



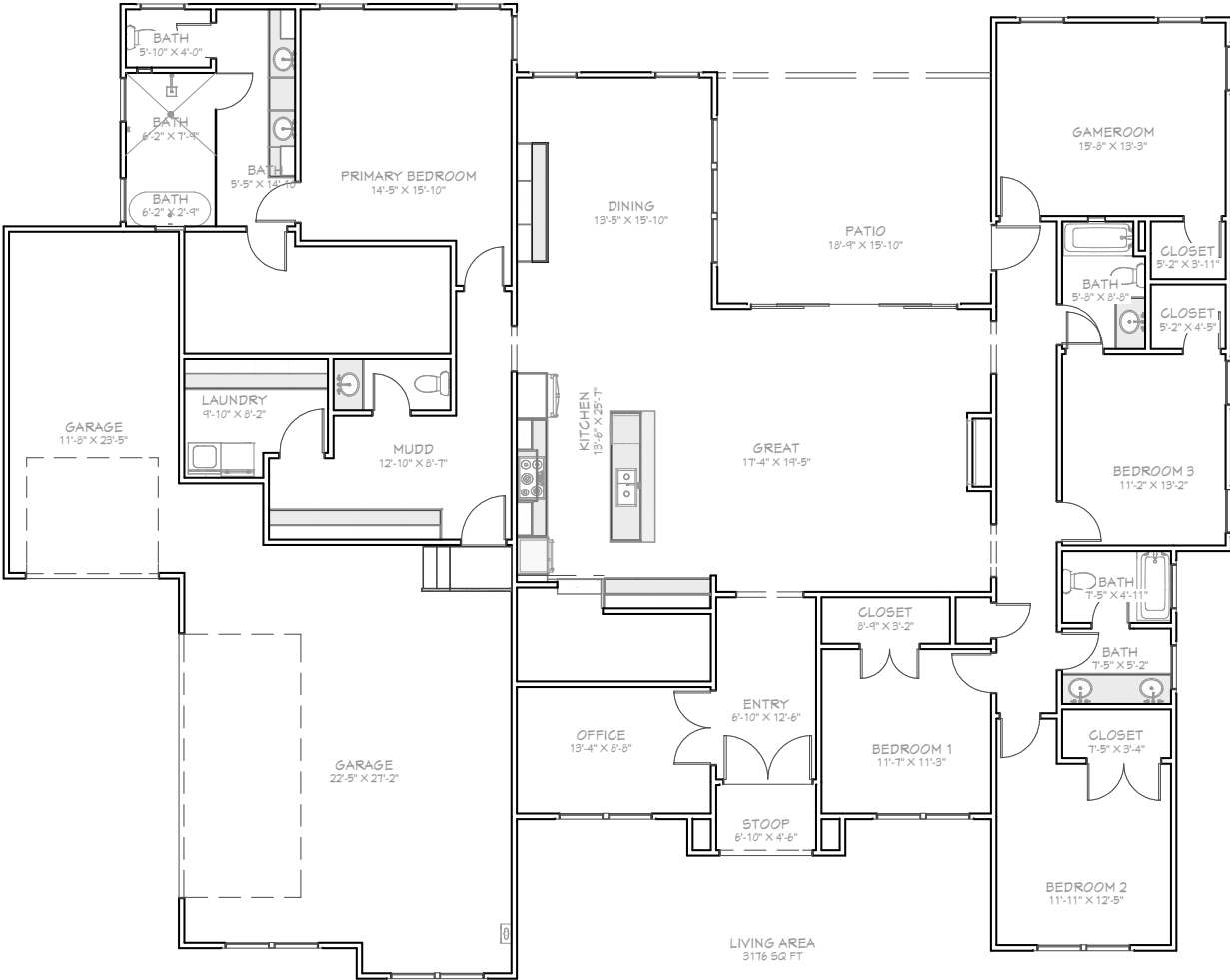




# Lot 3 (Hampton)

3,055<sup>SF</sup>

5 | 3.5 | 2

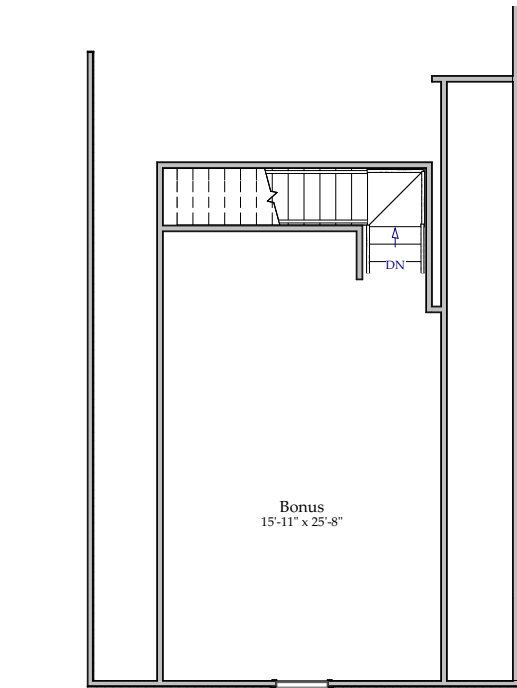




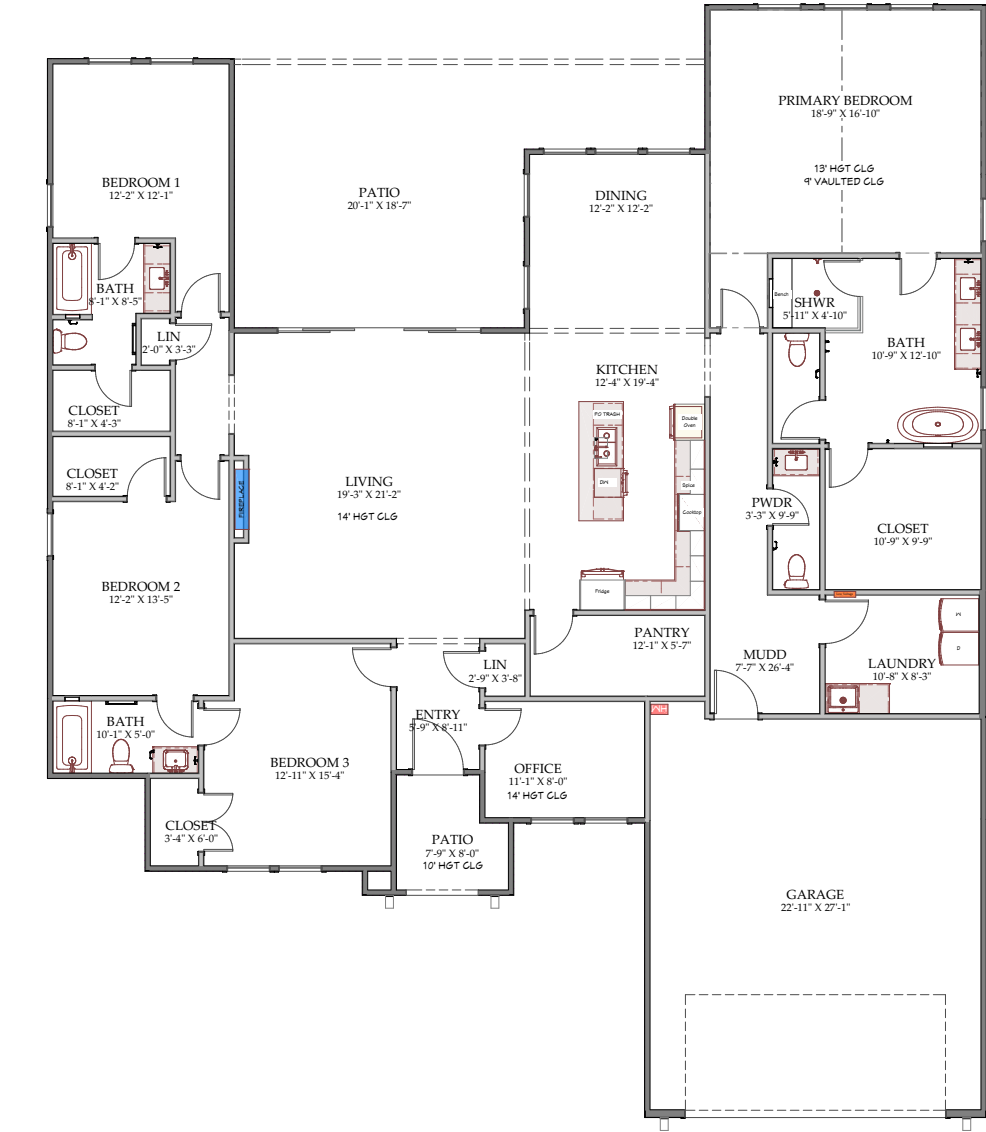
# Lot 4 (Pellum)

3306<sub>SF</sub>

4 | 4.5 | 2



Living Area  
422 sq ft



LIVING AREA  
2884 SQ FT





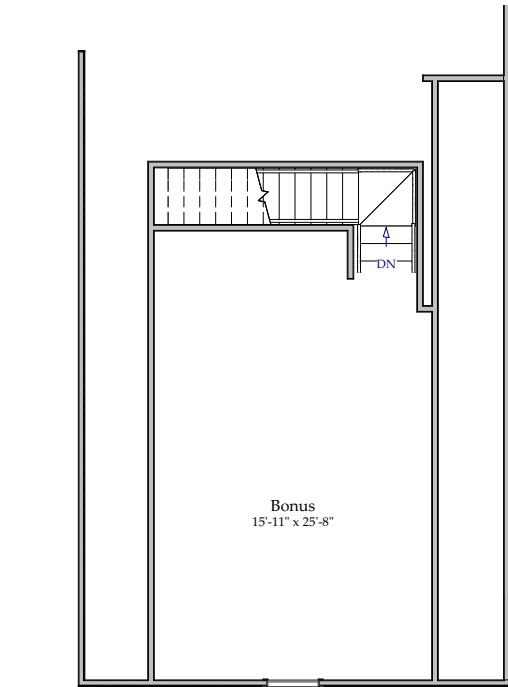




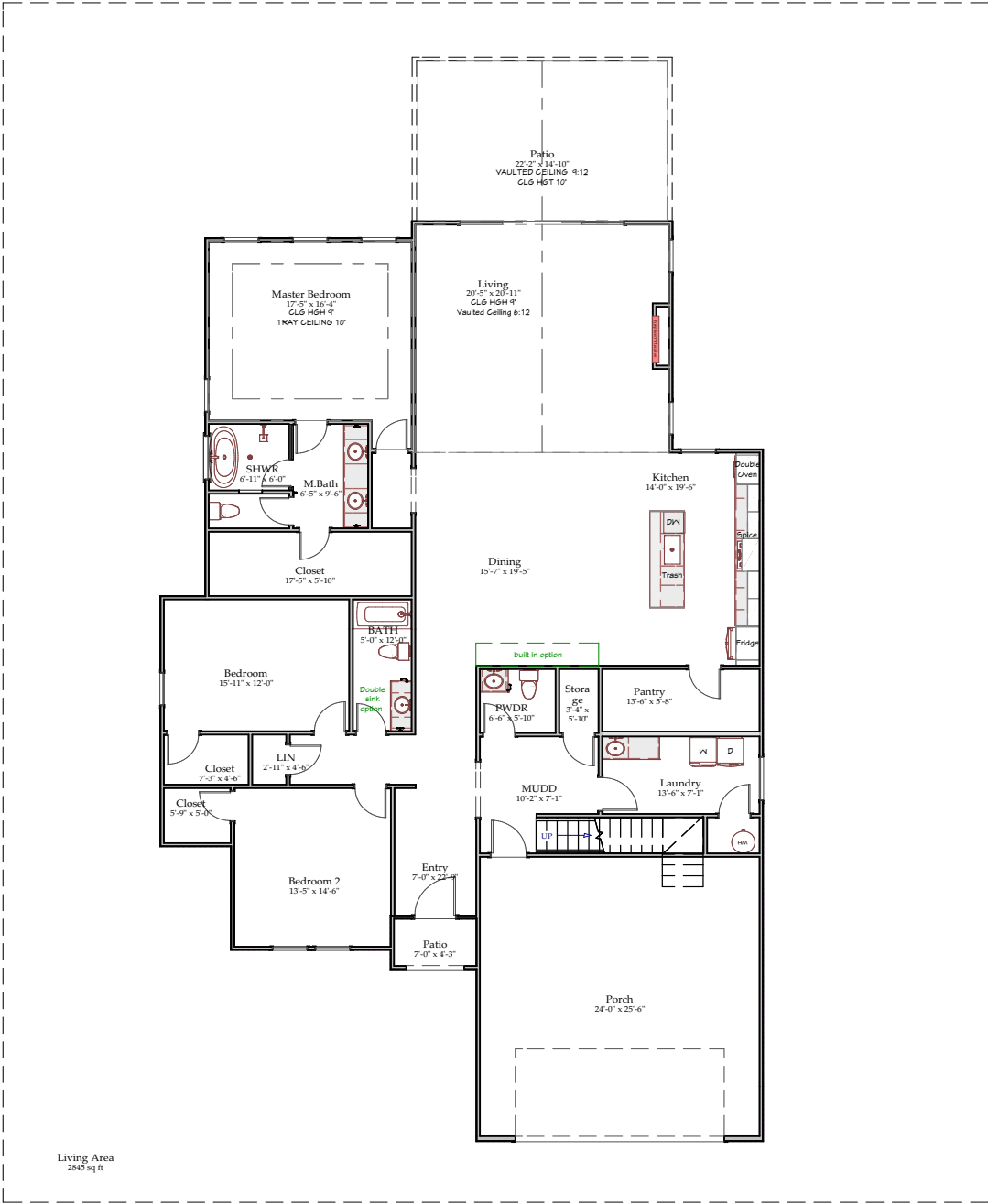
# Lot 6 (Flynn)

3267<sub>SF</sub>

3 | 2.5 | 2



Living Area  
422 sq ft



Living Area  
2845 sq ft



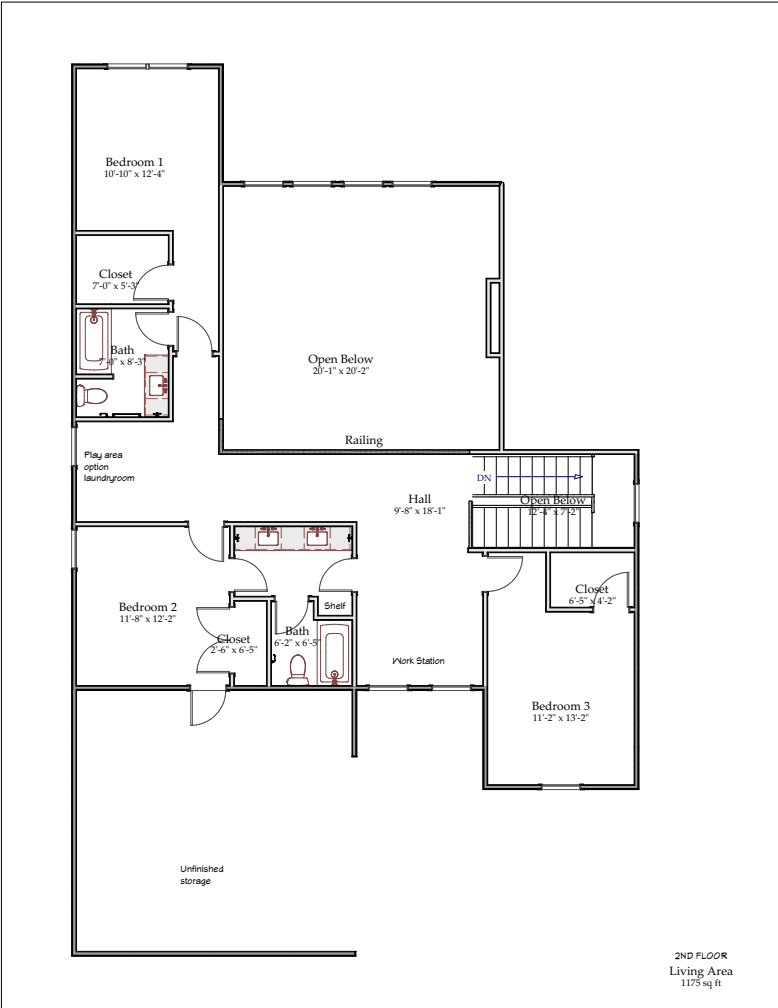




# Lot 7 (Hollie)

3290<sub>SF</sub>

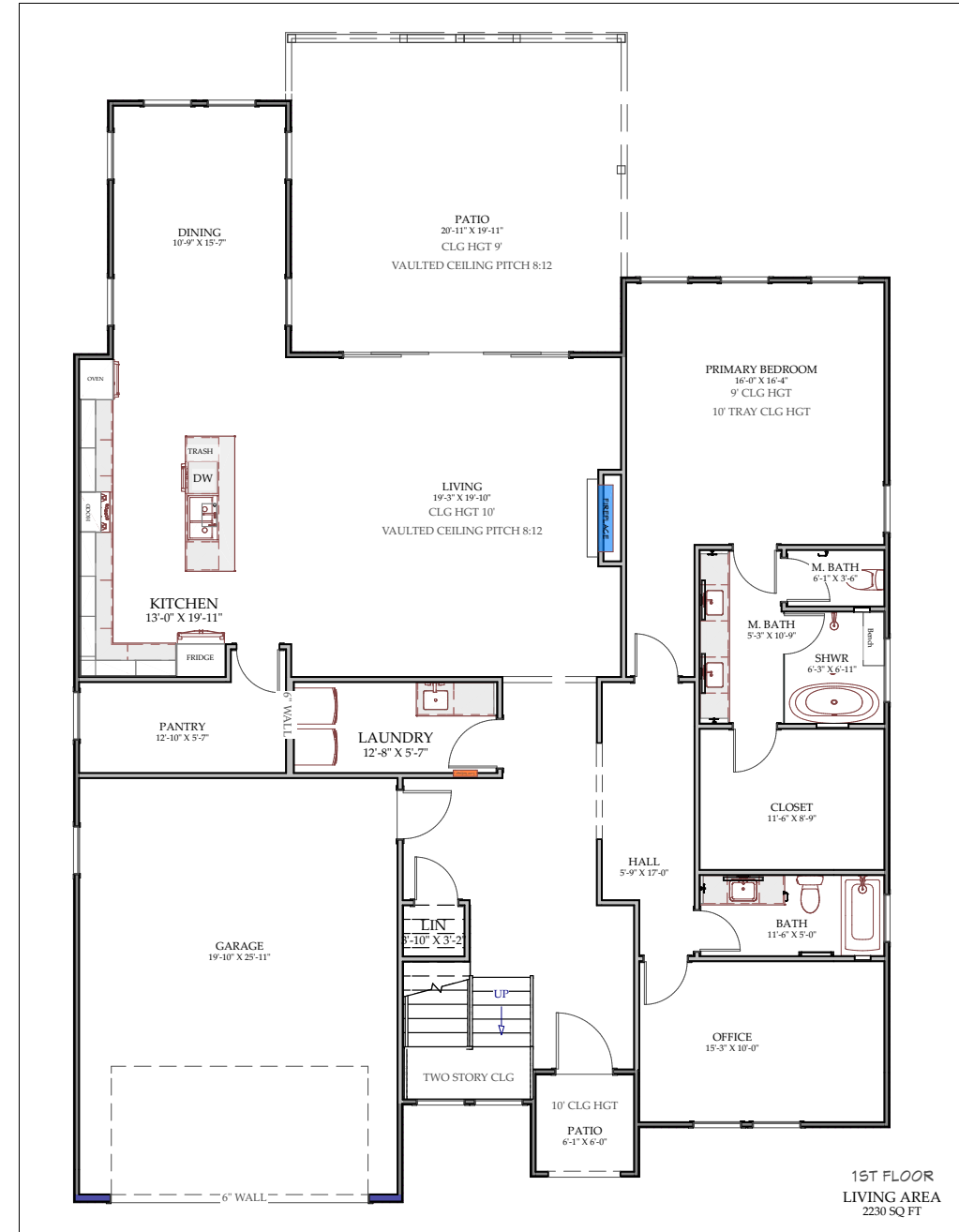
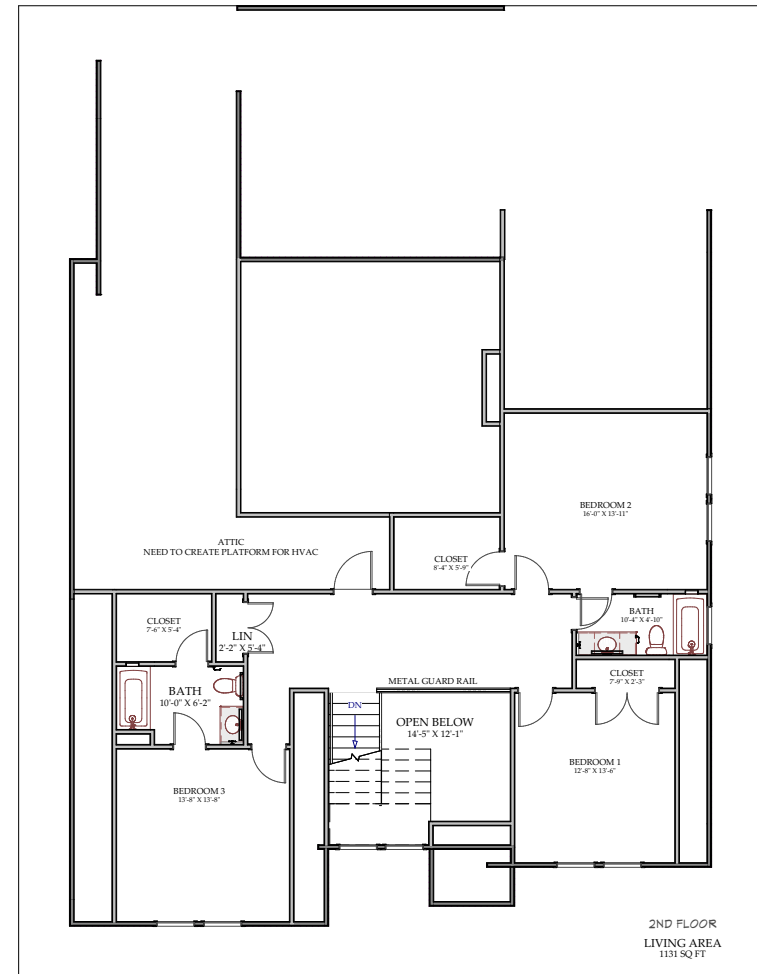
4 | 3.5 | 2





3361<sub>SF</sub>

 4 |  4 |  2



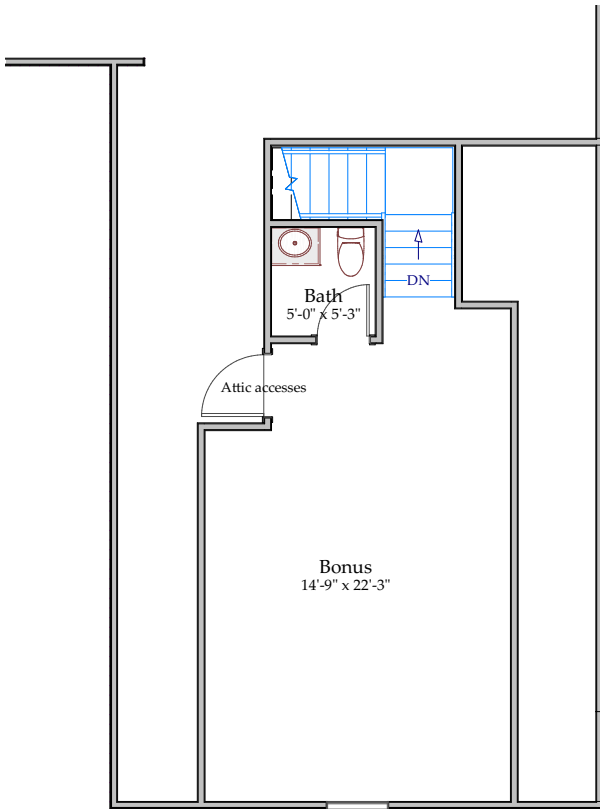




# Lot 9 (Willow)

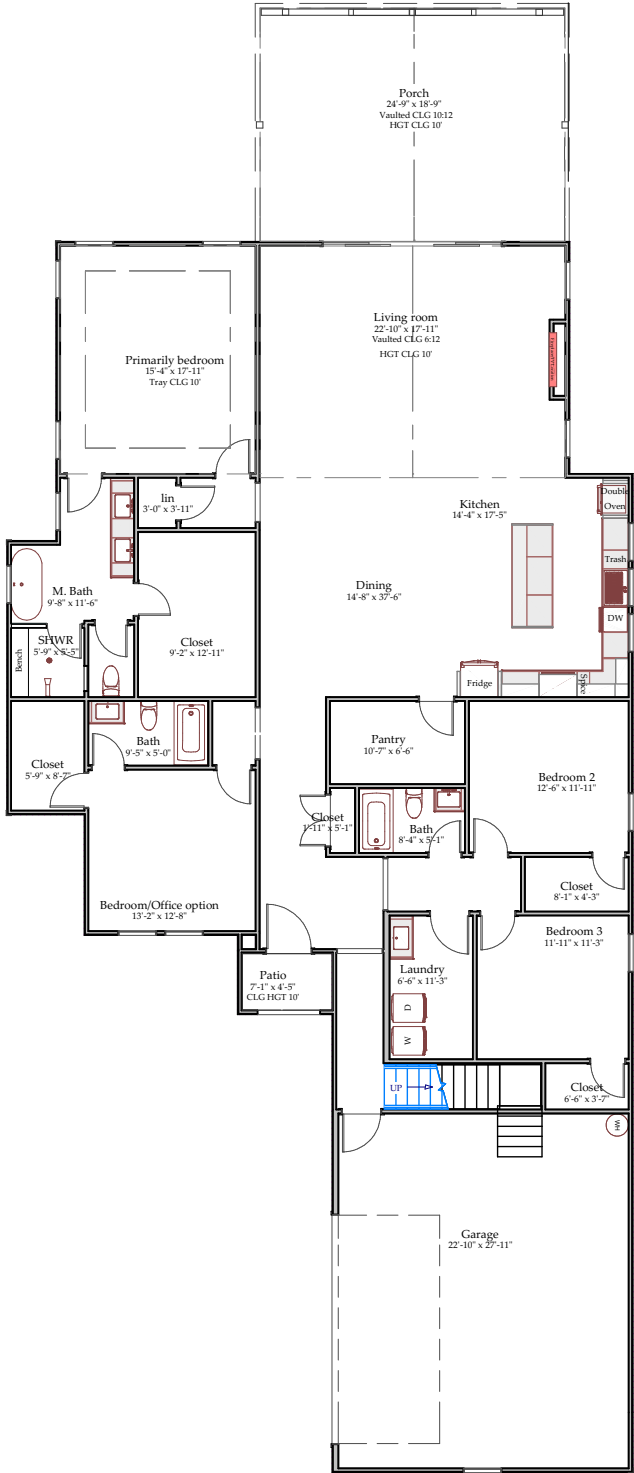
3161<sub>SF</sub>

3 | 2 | 2



Bonus  
Living Area  
382 sq ft

Living Area  
2779 sq ft

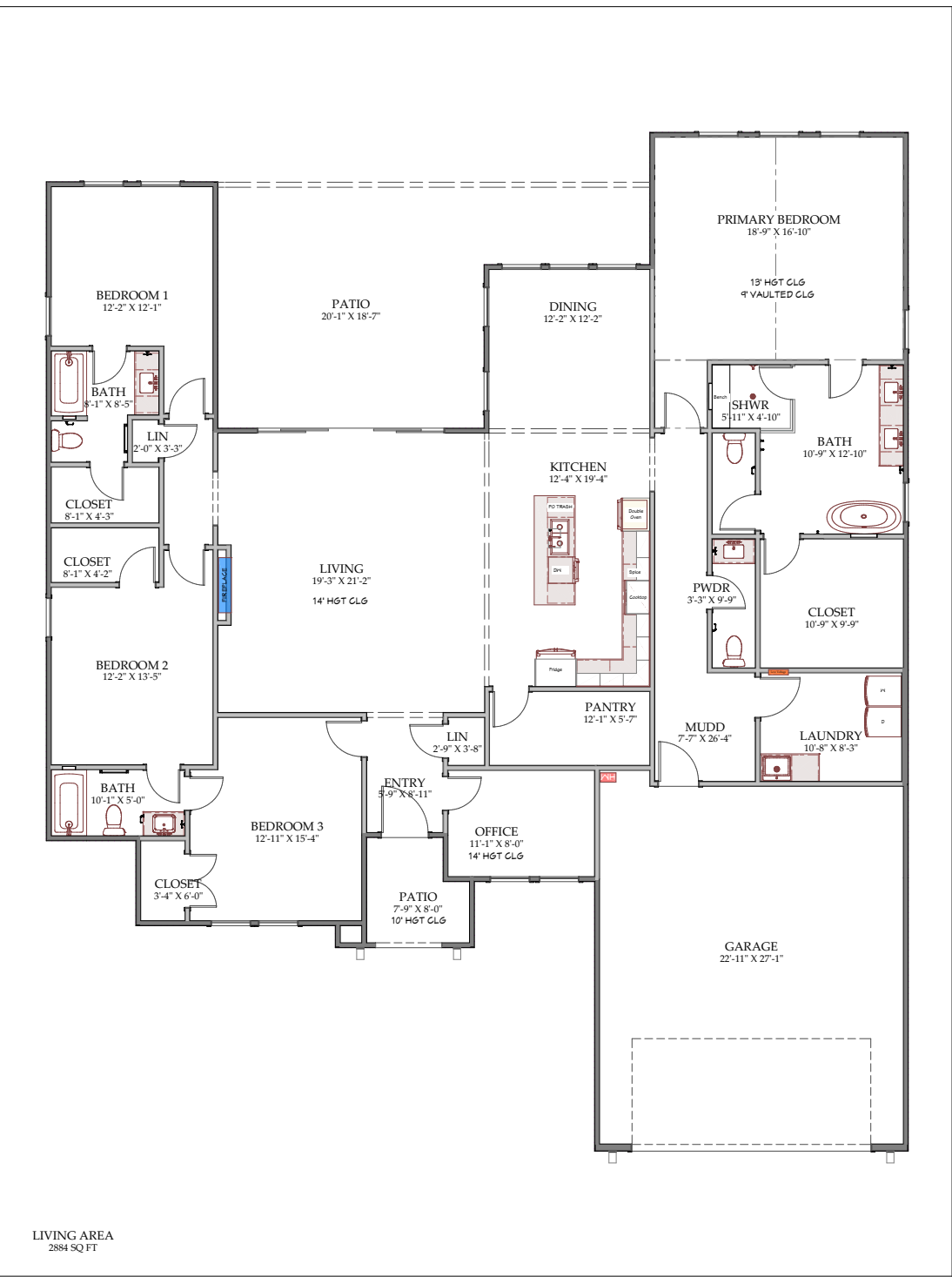
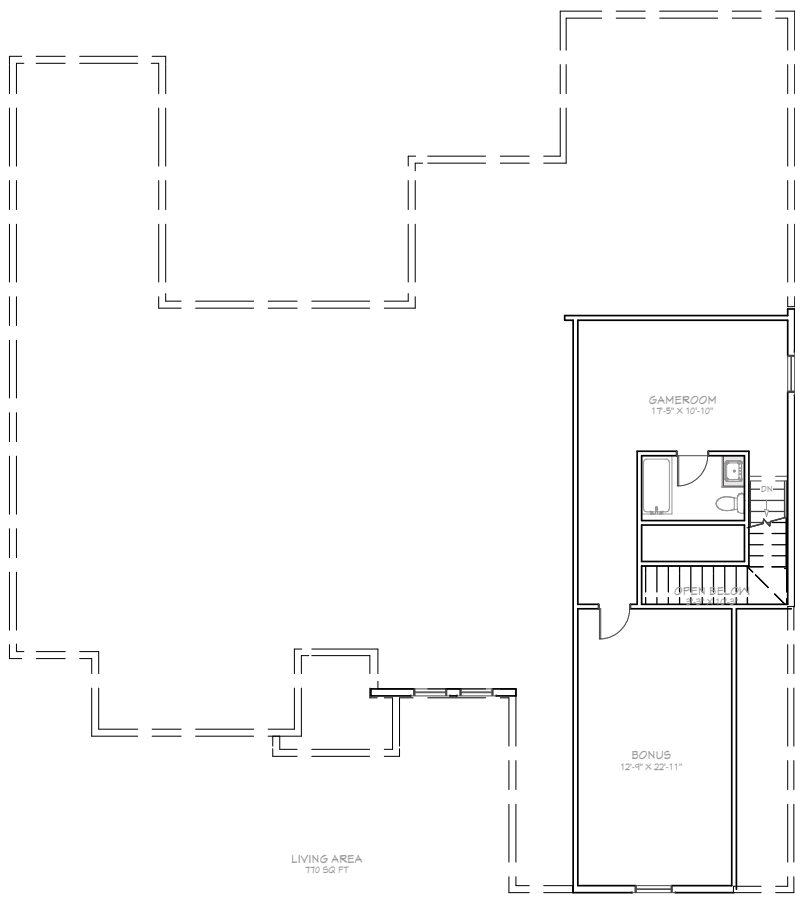




# Lot 10 (Pellum)

3,654<sub>SF</sub>

4 | 4.5 | 2



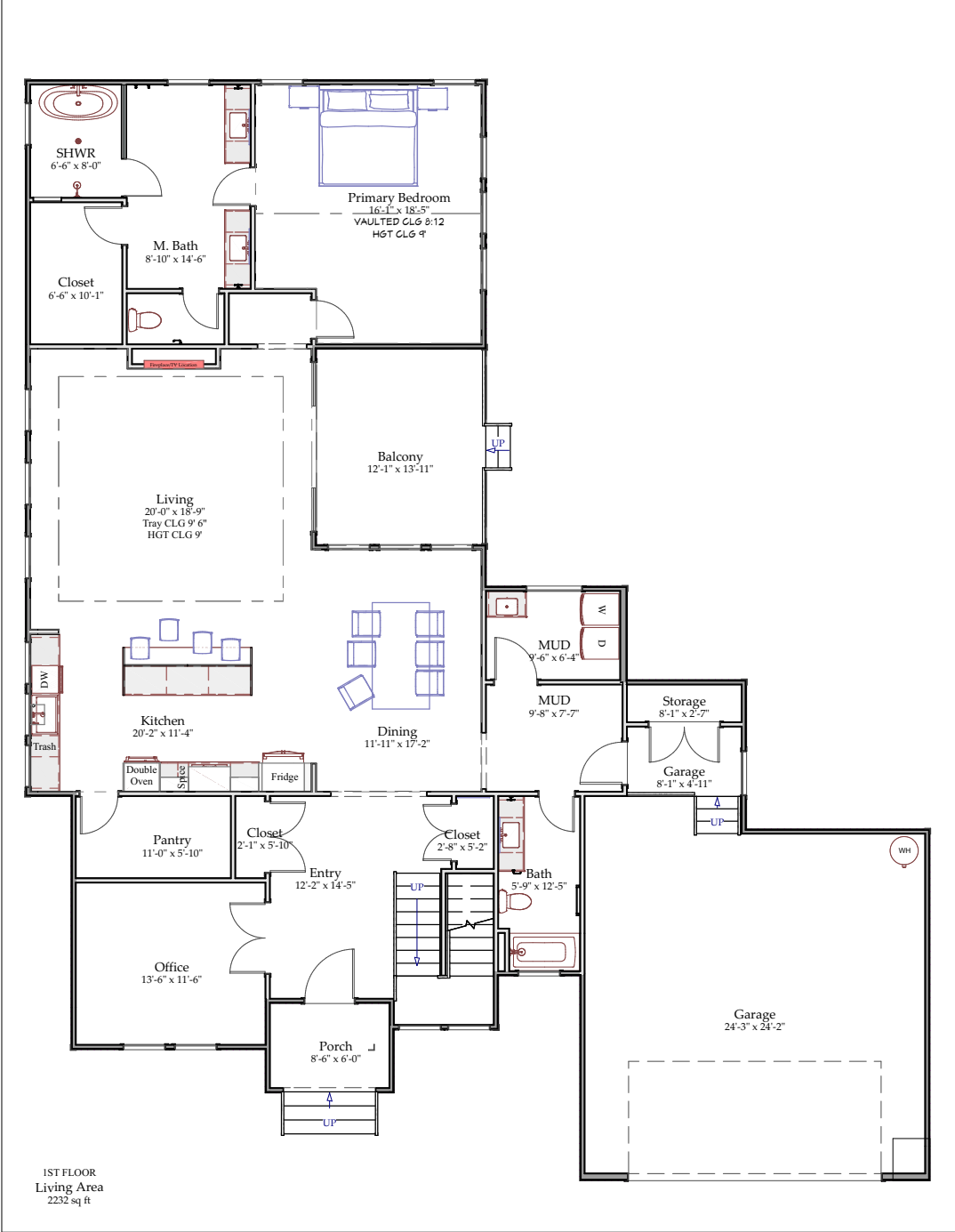
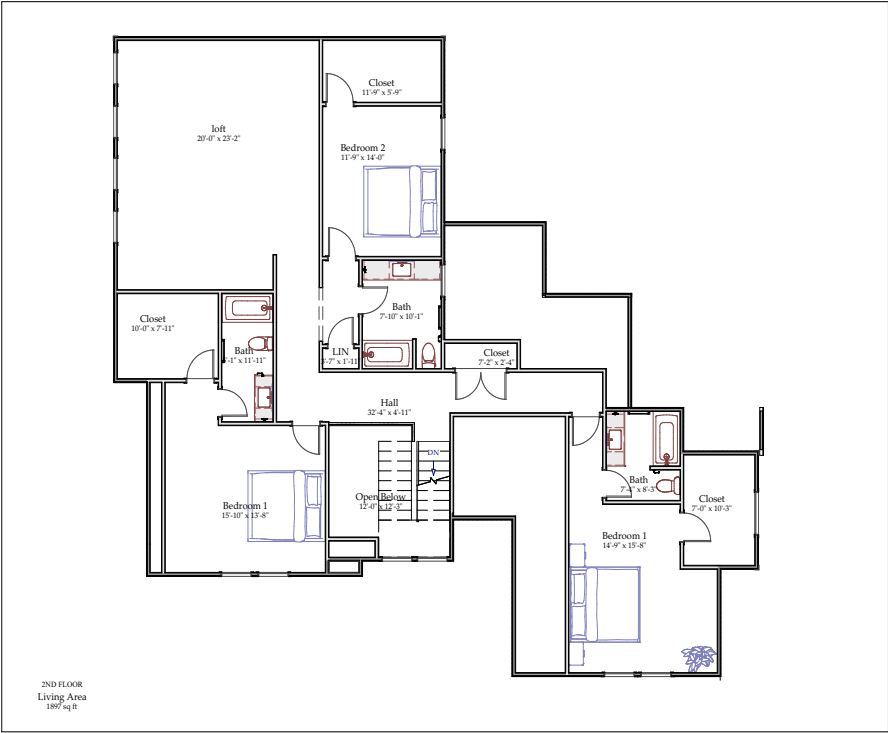




# Lot 11 (Athens)

4129<sub>SF</sub>

4 | 4.5 | 2

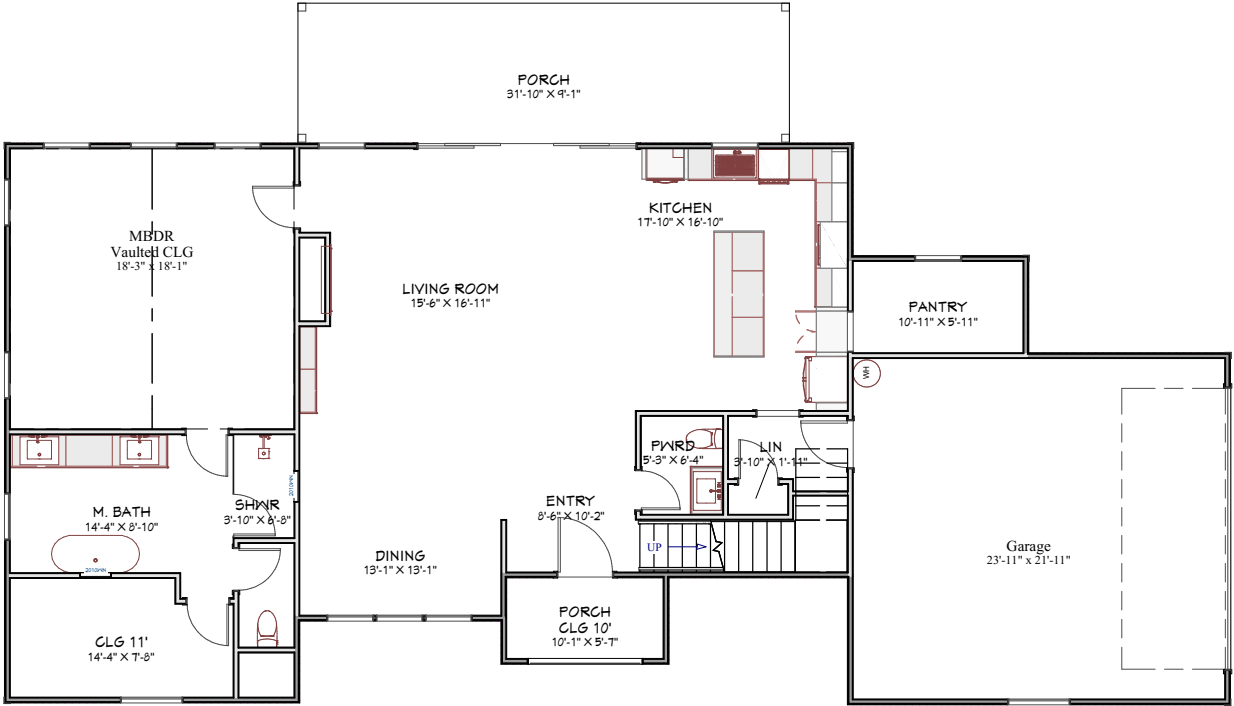




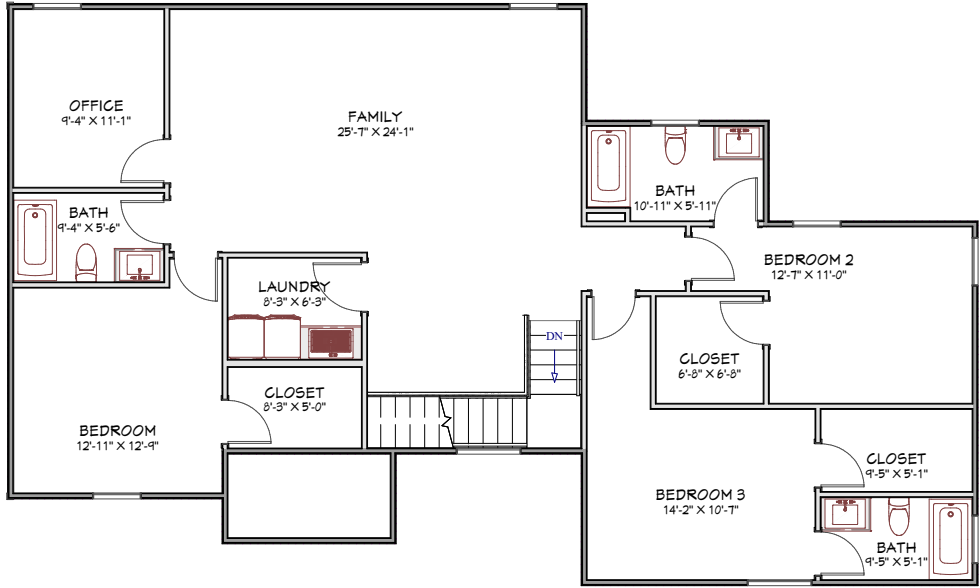
# Lot 12 (Pearl)

3350<sub>SF</sub>

4 | 3.5 | 2



1ST FLOOR  
LIVING AREA  
1759 SQ FT



2ND FLOOR  
LIVING AREA  
1542 SQ FT



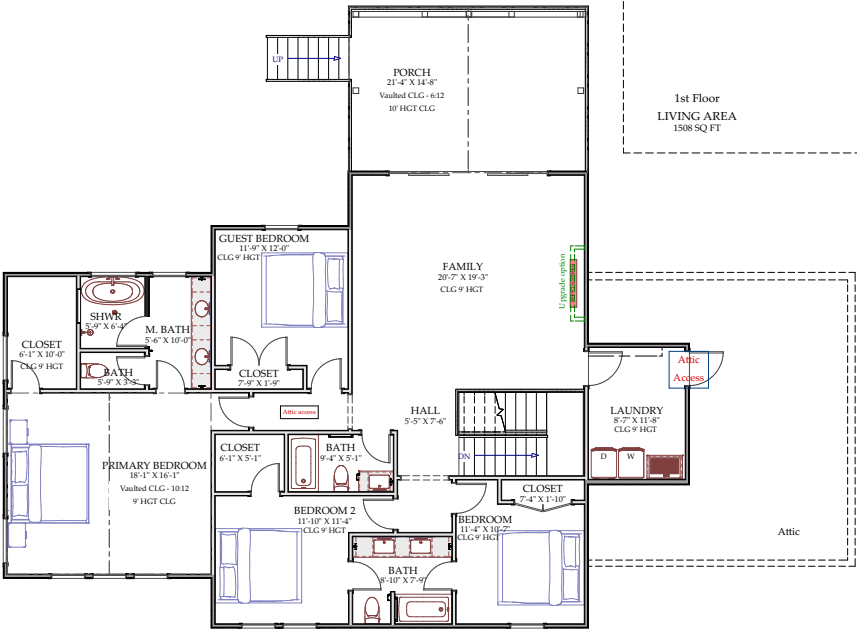
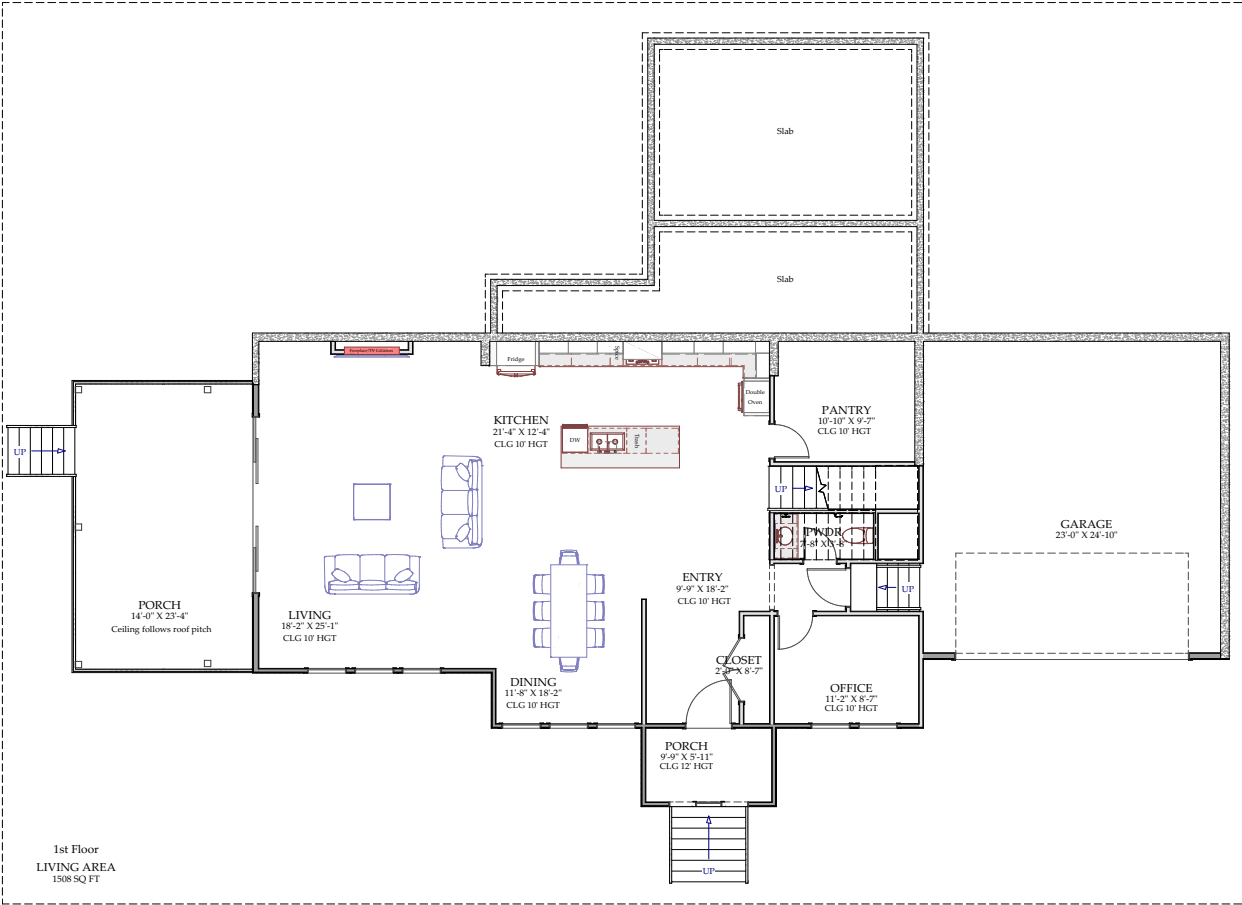




# Lot 13 (Jane)

3323<sub>SF</sub>

5 | 4.5 | 2



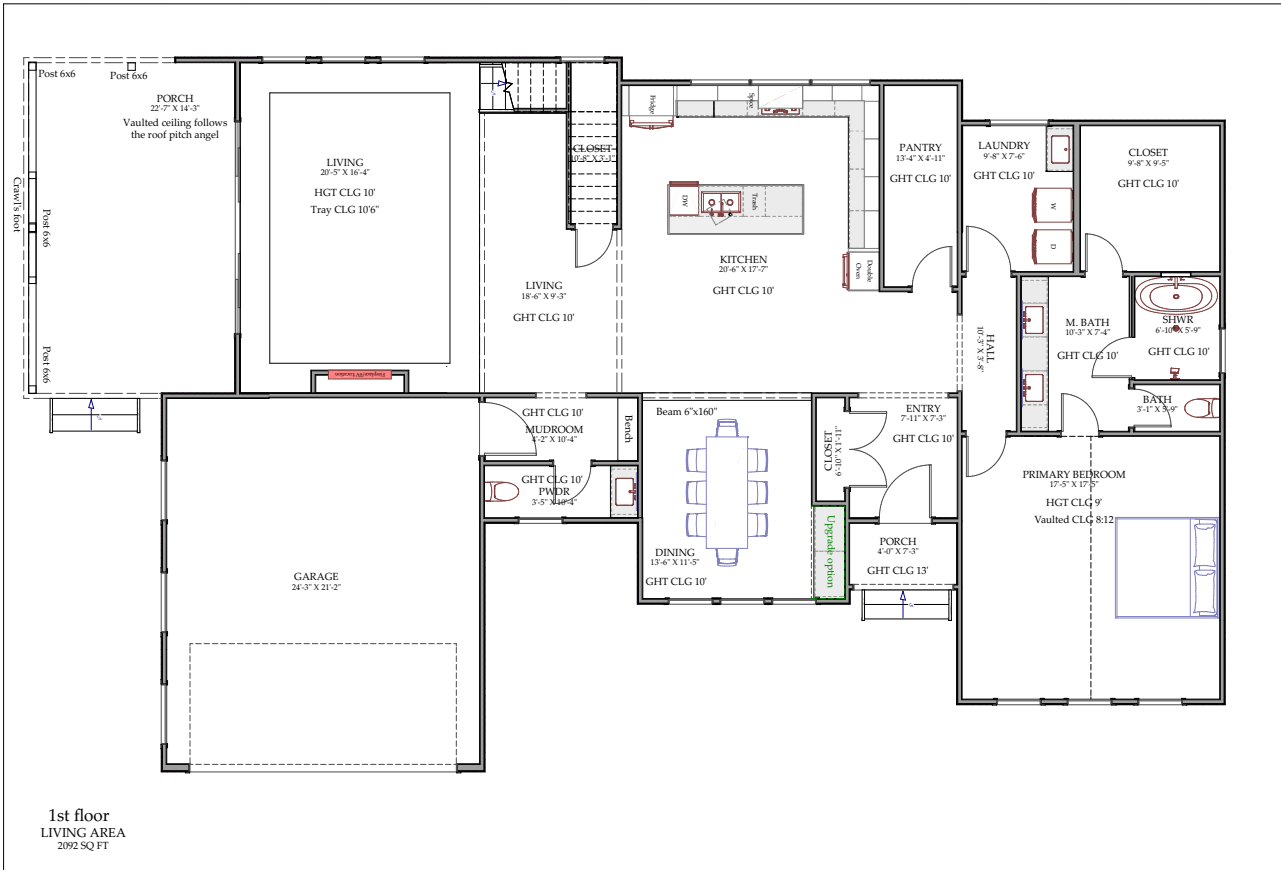
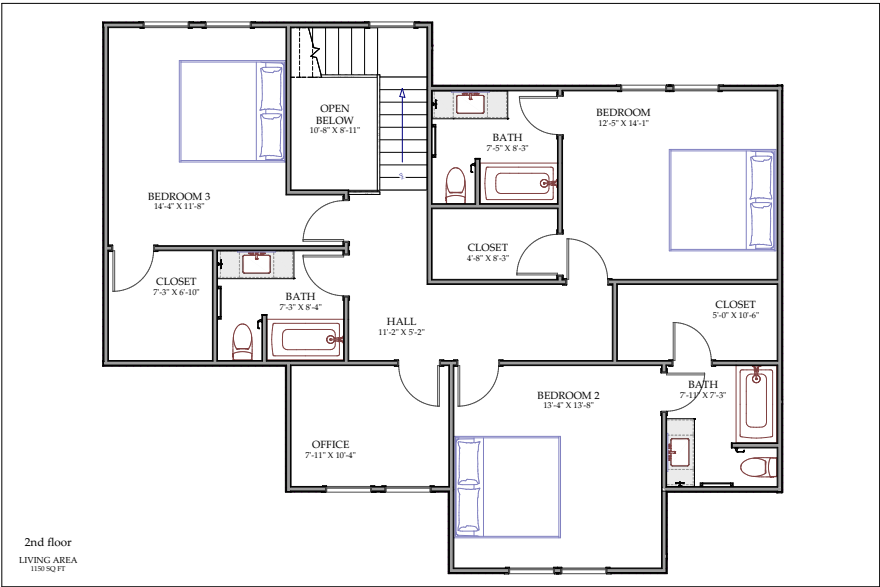
2nd Floor  
Living Area



# Lot 14 (Nordic)

3242<sub>SF</sub>

5 | 5.5 | 2



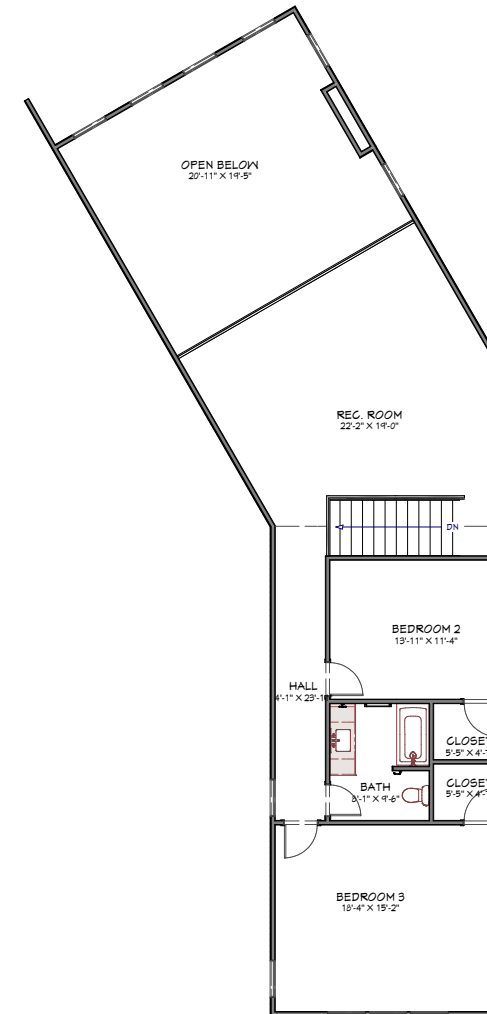




# Lot 15 (Jill)

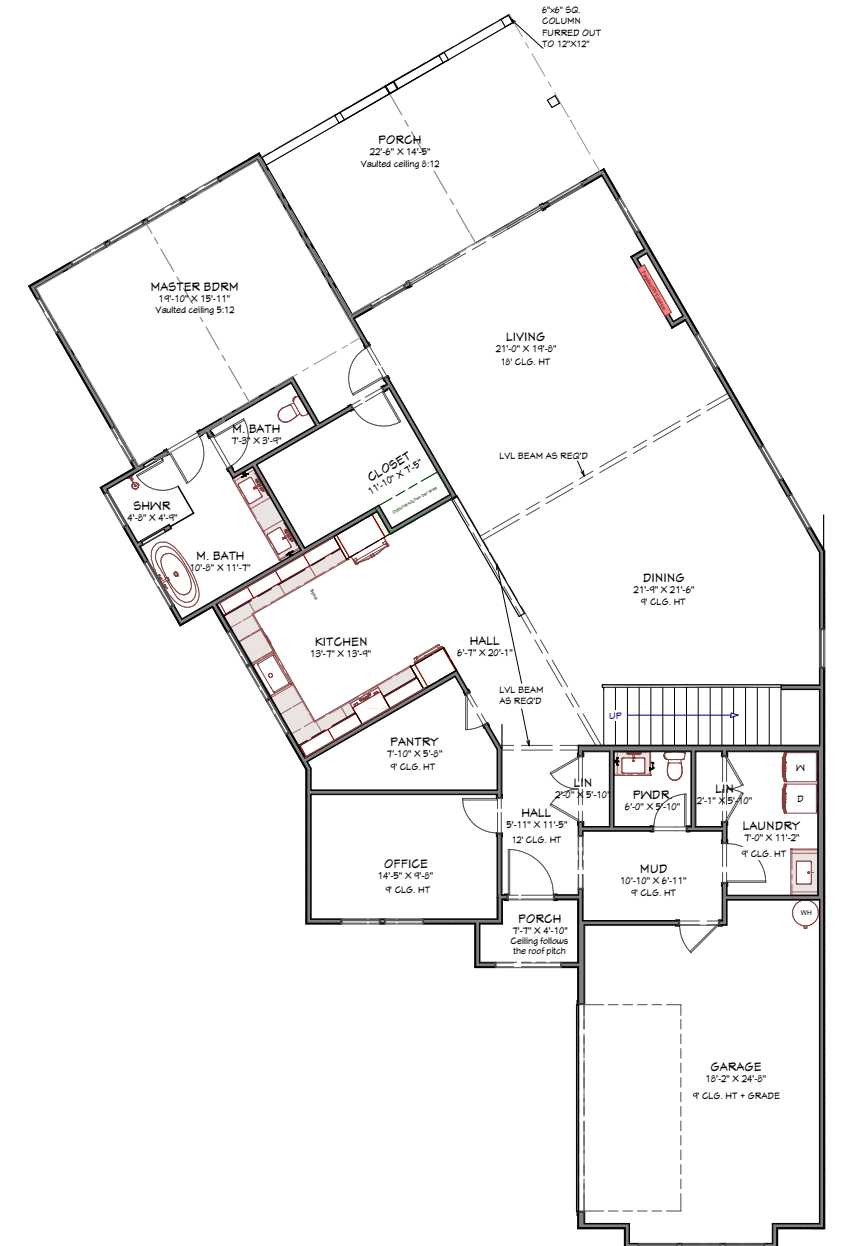
3594<sub>sF</sub>

3 | 2.5 | 2



1ST FLOOR  
LIVING AREA  
2482 SQ FT

2ND FLOOR  
LIVING AREA  
1111 SQ FT

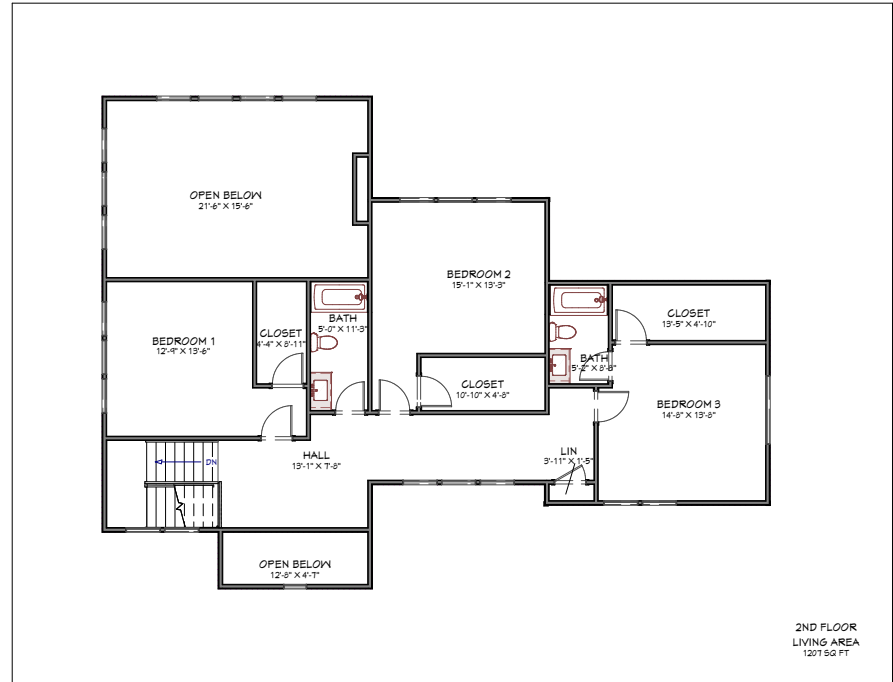
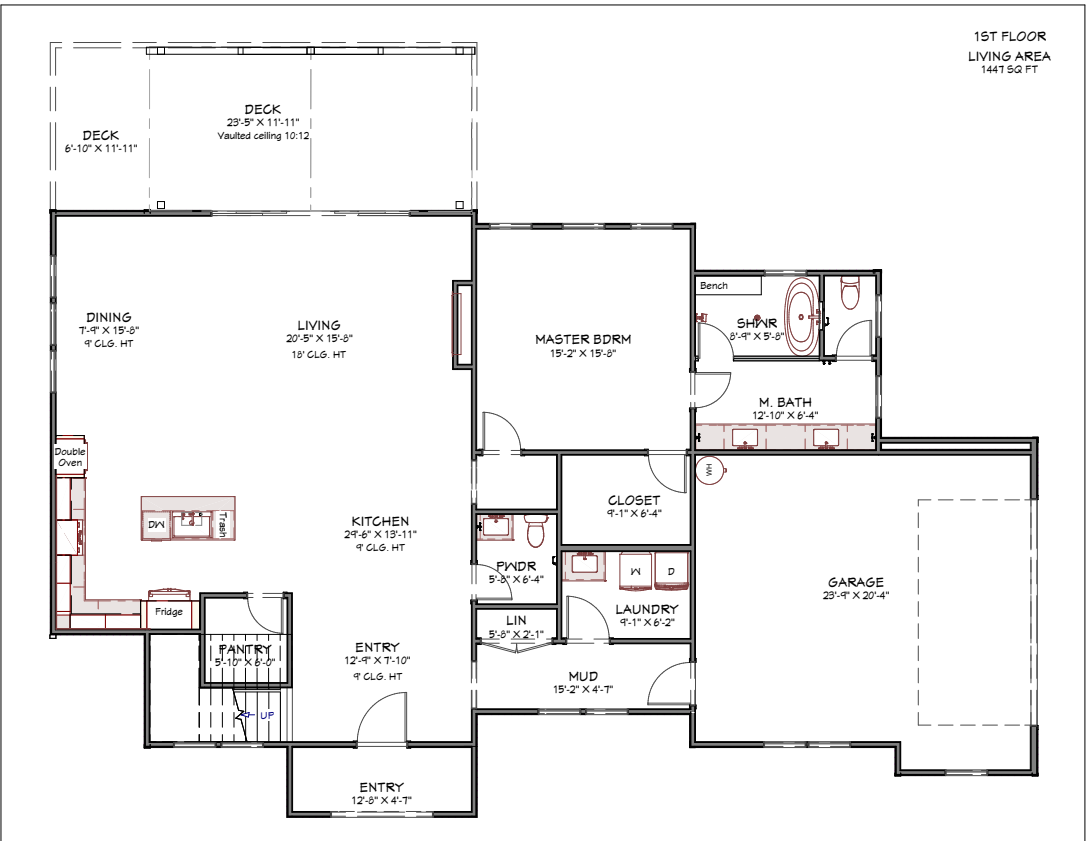




# Lot 16 (Jack)

2654<sup>sf</sup>

4 | 3.5 | 2



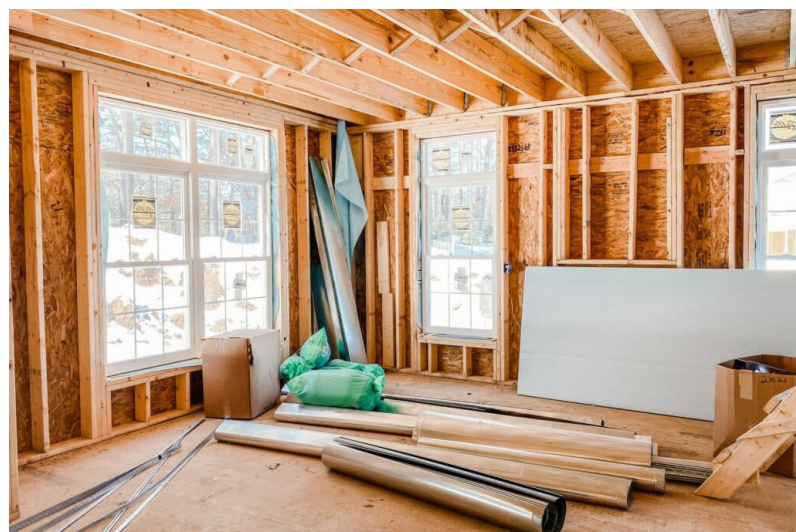




Customized lighting



Exterior Trims, Colors, and Materials



Customizable Floor Plans



Luxury Upgrades

## Make this house your home.

It's time to customize your future home.

Choosing from a variety of customizations has never been easier.

Simply come to our Greencity Design Studio, our design specialists are excited to work with you to make your dream home come true.

Visit us today



# Greencity Building Process



Walk Through Timeline	
Stage 1	Week 1-3
Stage 2	Week 4-6
Stage 3	Week 6-7
Stage 4	Week 8-9
Stage 5	Week 9-10
Stage 6	Week 10-11
Completion	Week 12

## Meet your team.

### GREENCITY SALES TEAM



Drew Torres  
864.275.7741  
sales@greencityhomes.us

### PREFERRED LENDER



Derek Horton  
Southern First Bank  
864.2497.1519  
dhorton@southernfirst.com

### PREFERRED ATTORNEY



Steve Hamett  
Blair Cato - Spartanburg  
864-597-0300  
steve@blaircato.com

We want to make owning a home in the Innova Estates Community as easy as possible, so we built a team just for you.

From simple questions, to complex financial documents, to tailoring your future home, we have the systems in place to make this process a breeze.

Reach out to a Greencity Specialist





## Question? Speak with our team.

**Office:**

320 Business Pkwy, Suite A  
Greer, SC 29651

**Call:**

864.561.3294

**Email:**

[alex.gutsalo@greencitydev.us](mailto:alex.gutsalo@greencitydev.us)

**Visit:**

[GreenCityHomes.us](http://GreenCityHomes.us)

