




# THE SOUNDVIEW COMMUNITY

Explore this stunning new  
townhome community.

 **1153 NW 58<sup>th</sup> Street**  
**Seattle, WA, 98199**

[GreencityHomes.us](https://GreencityHomes.us)







## **A new community with so much to offer.**

Introducing Greencity Homes' latest community in Ballard—The Soundview is a collection of five newly constructed four- bedroom townhomes designed for modern living and comfort.



## About the Soundview Community.

Located in the heart of Ballard, these homes feature exceptional design and quality with a spacious layout.

The well-appointed kitchens come with the latest matte grey Bosch appliances and stunning cabinetry packages.

Select homes offer outdoor patio spaces off the entry level and every home enjoys an off-street assigned parking space.

Each spacious primary suite includes its own private balcony, vaulted ceilings and access to private rooftop decks, offering a serene retreat for relaxation.

Discover the exceptional features and contemporary style of the Soundview in Ballard, by Greencity Homes.







# Choose your model home.

BALLARD. LUXURY TOWNHOMES

2,068 - 2,200 Sq Ft

4 BEDROOMS

2.75 BATHROOMS

4-STAR BUILT GREEN

PREMIUM MATTE GREY BOSCH APPLIANCE PACKAGES

EV-READY PARKING PAD INCLUDED

SOARING LIVING ROOM CEILINGS WITH LOFTED MEZZANINE LEVELS

EASY COMMUTE TO DOWNTOWN SEATTLE  
CLOSE TO SHOPS, EATERIES & COFFEE SHOPS OF BALLARD



## Choose Your Floor Plan

Choose from 5 thoughtfully designed homes, you're sure to find your ideal fit.

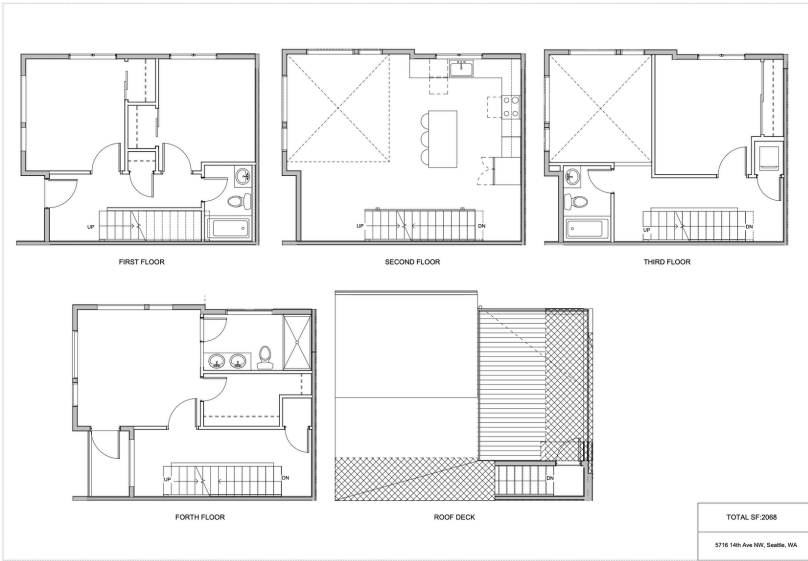
\* All images used are for illustrative purposes only and are intended to convey the concept and vision for the home. They are for guidance only, may alter as work progresses and do not necessarily represent a true and accurate depiction of the finished product





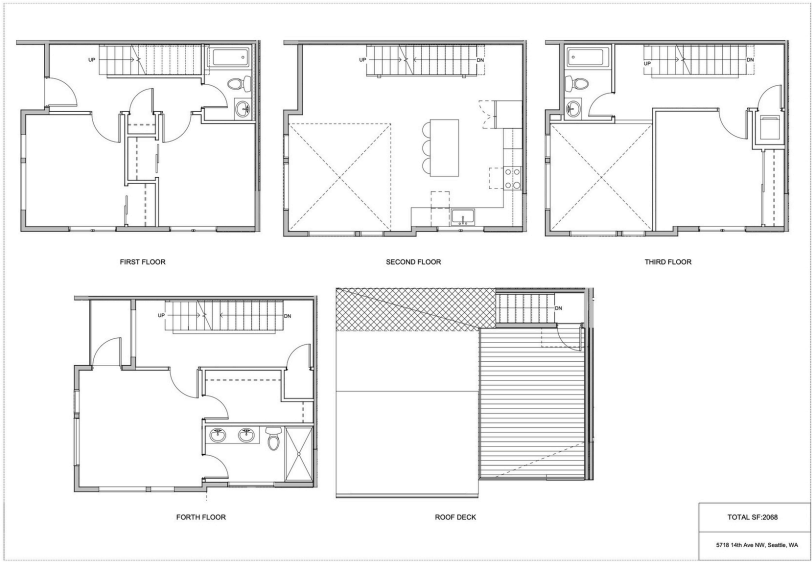
5716 14<sup>th</sup> Ave NW

2,068<sub>SF</sub> 4 2.75 1



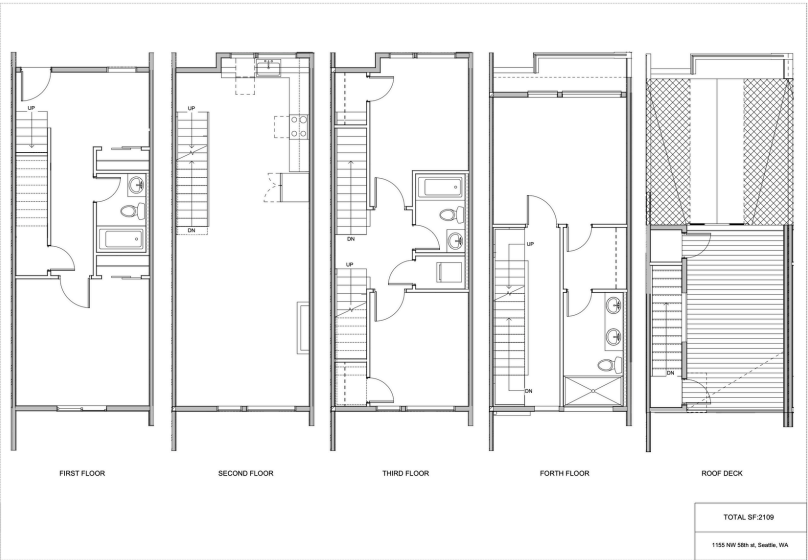
5718 14<sup>th</sup> Ave NW

2,068<sub>SF</sub> 4 2.75 1



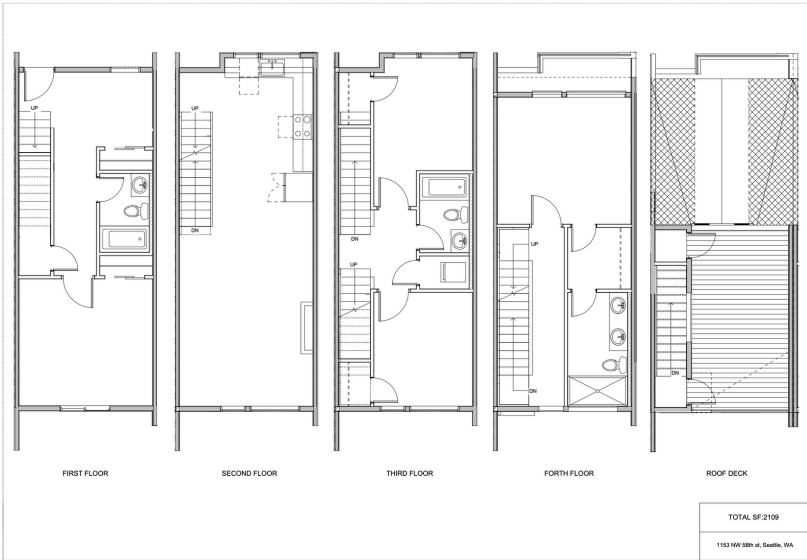
1155 NW 58<sup>th</sup> St

2,109 SF 4 2.75 1



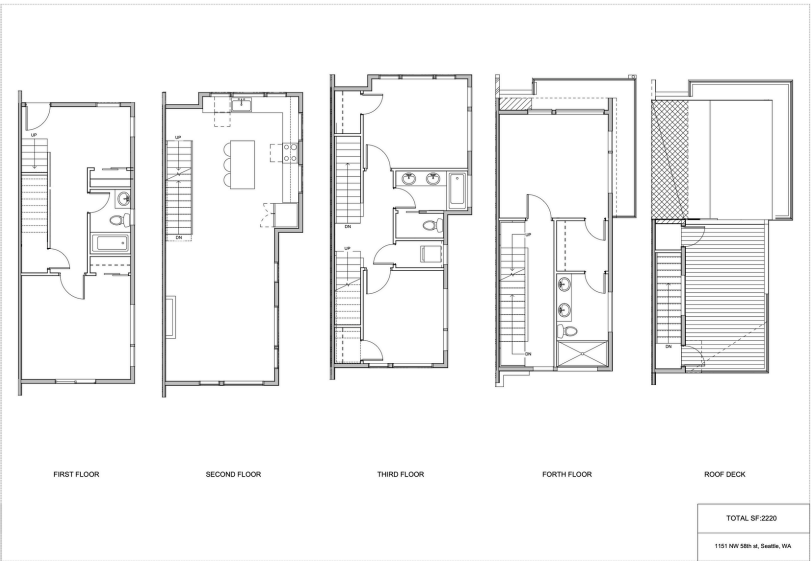
1153 NW 58<sup>th</sup> St

2,109 SF 4 2.75 1



1151 NW 58<sup>th</sup> St

2,200 SF 4 2.75 1





# Greencity Favorites



## EATERIES

Ballard Coffee Co.  
Asadero Ballard  
The Walrus and the Carpenter  
Arashi Ramen  
Mainstay Provisions  
Ballard Pizza Company  
Salt & Straw Ice Cream



## PARKS & ENTERTAINMENT

Tractor Tavern  
National Nordic Museum  
Ballard Locks  
Golden Gardens Park  
Brewery District  
Woodland Park Zoo  
Ballard Farmer’s Market



## DAILY CONVENIENCES

Town & Country Market  
Safeway  
Metropolitan Market  
Trader Joe’s



## SCHOOLS

West Woodland Elementary School  
Hamilton International Middle School  
Ballard High School  
St. Alphonsus School  
St. John School



## Got questions? Speak with our team.

### Community location:

1153 NW 58<sup>th</sup> Street, Seattle, WA 98107



**Listing Agent**  
**JOHN COWAN**  
206.350.1099  
jcowan@windermere.com



**Listing Agent**  
**MARNIE OSHAN**  
206.659.8116  
marnie@windermere.com



**Preferred Lender**  
**BRET EICKHOFF**  
425.241.8082  
bret@breteickhoff.com

Scan to learn more



[greencityhomes.us](https://greencityhomes.us)

