



# ISLA COMMUNITY

Explore our extensive range of  
beautiful home designs.



12424 NE 90th St  
Kirkland, WA 98033

[GreencityHomes.us](https://GreencityHomes.us)





## **A new community with so much to offer.**

Introducing Greencity Homes' latest community in Kirkland—Isla is a collection of four newly constructed three-bedroom cottages designed for modern living and comfort.



## About our Isla Community

Tucked into a vibrant pocket of Kirkland, Isla offers a fresh collection of contemporary townhomes thoughtfully designed for style, comfort, and connection.

Clean lines, expansive windows, and warm natural finishes define each home, creating bright, inviting interiors that reflect the essence of Pacific Northwest living.

Each residence features open-concept layouts, premium kitchens with quartz countertops and sleek cabinetry, and private outdoor spaces ideal for relaxing or entertaining. Each home includes a parking garage, blending convenience with modern design.

With close proximity to Kirkland's lively downtown waterfront, local parks, boutique shopping, and dining, Isla puts you within easy reach of everything this sought-after community has to offer—while providing a peaceful retreat to call home.







# Choose your cottage.

MAGNOLIA. LUXURY TOWNHOMES

- 1,688 Sq Ft
- 3 BEDROOMS
- 2.5 BATHROOMS
- 4-STAR BUILT GREEN

PREMIUM MATTE GREY BOSCH APPLIANCE PACKAGES

EV-READY PARKING PAD INCLUDED

SOARING LIVING ROOM CEILINGS WITH LOFTED MEZZANINE LEVELS

EASY COMMUTE TO DOWNTOWN SEATTLE

CLOSE TO SHOPS, EATERIES & COFFEE SHOPS OF QUEEN ANNE & BALLARD



# Choose Your Floor Plan

Choose from our four thoughtfully designed homes, you're sure to find your ideal home.

\* All images used are for illustrative purposes only and are intended to convey the concept and vision for the home. They are for guidance only, may alter as work progresses and do not necessarily represent a true and accurate depiction of the finished product



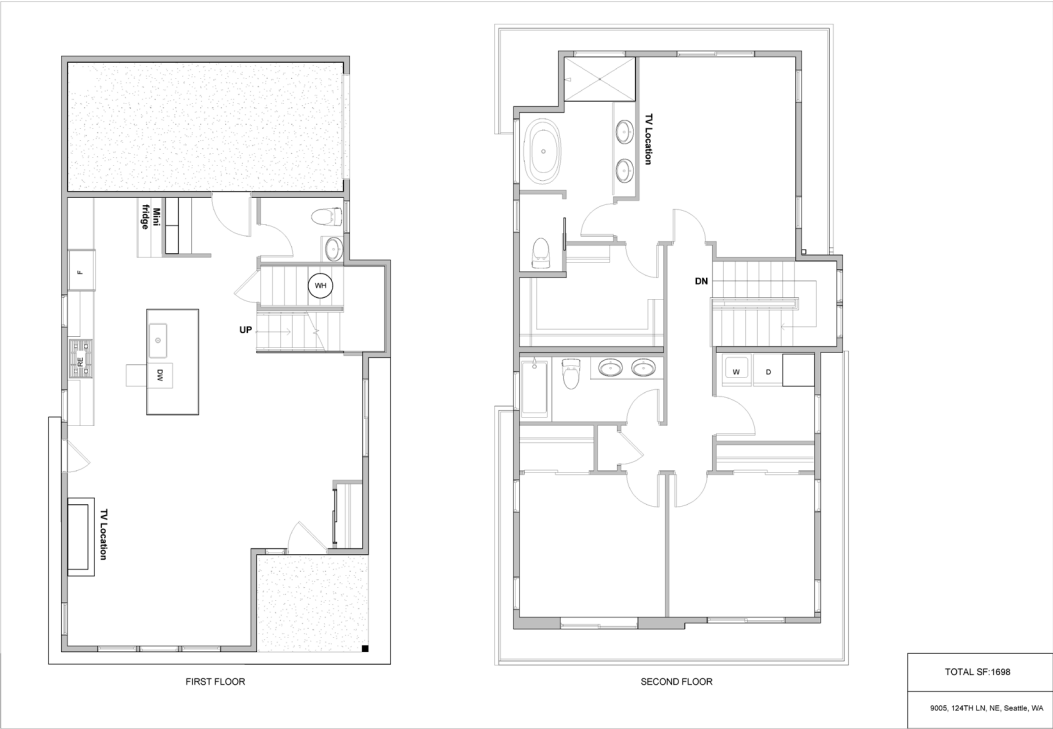


# Cottage 1

9005

1688<sub>SF</sub>

3 | 2.5 | 1

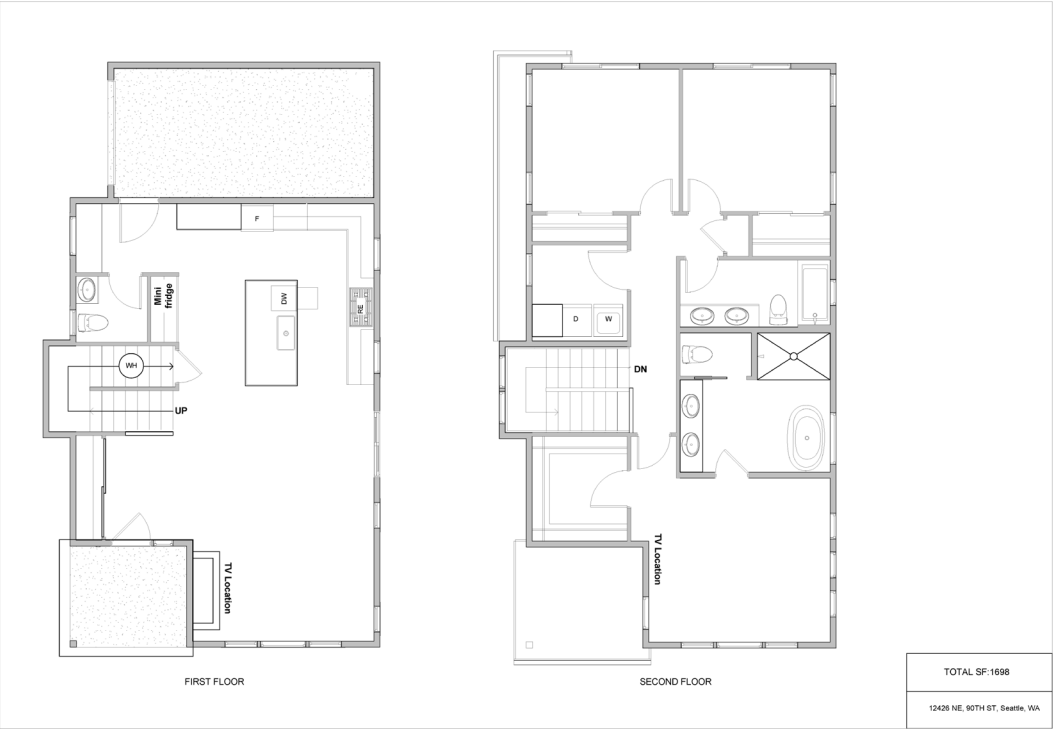


# Cottage 2

124626

1688<sub>SF</sub>

3 | 2.5 | 1



# Cottage 3

9012

1688<sub>SF</sub>

3 | 2.5 | 1



# Cottage 4

9016

1688<sub>SF</sub>

3 | 2.5 | 1



# Greencity Favorites



## EATERIES

Café Juanita  
DERU Market  
Le Grand Bistro Americain  
Volterra  
Como



## DAILY CONVENIENCES

Metropolitan Market Kirkland  
PCC Community Markets  
QFC  
Trader Joe's  
Costco



## PARKS & ENTERTAINMENT

Juanita Beach Park  
Marina Park Pavilion  
Cross Kirkland Corridor Trail  
Bridle Trails State Park  
Peter Kirk Park



## School

Lakeview Elementary School  
Peter Kirk Elementary School  
Kirkland Middle School  
Lake Washington High School  
Northwest University

## Got Question? Speak with our team.

### Community location:

1153 NW 58th St  
Seattle, WA  
98107



**Preferred Lender**  
Bret Eickhoff  
[bret@breteickhoff.com](mailto:bret@breteickhoff.com)



**Listing Agent**  
Gabriel Hernandez  
[gabeh@urbanrepartners.com](mailto:gabeh@urbanrepartners.com)  
(206)429-4735



Scan to learn more

