



BOULEVARD AT HOLLOWDALE

Explore our extensive range of
beautiful home designs.

1510 HOLLOW DALE PL

GreencityHomes.us



BOULEVARD AT HOLLOWDALE

Explore our extensive range of
beautiful home designs.

 1510, Hollow Dale Place,
Everett, WA, 98204

GreencityHomes.us



A new community with so much to offer.

Welcome to the Hollowdale Community by Greencity Homes. Imagine crafting your own sanctuary, a place that reflects your unique style and taste. With a Greencity Design Specialist by your side, you can personalize every detail—from the finishes in your kitchen, dining room, bedrooms, to the elegance of your bathrooms.

Sweeping floor plans offer expansive spaces, inviting your creative visions to flourish. Greencity lays the foundation, and when the time comes, your personal touch brings it to life. Oversized EV 2-car garages, radiant kitchens with floating islands and powder rooms, luxurious primary suites with private decks and indulgent 4-piece baths, and ample room for guests await. Every detail has been thoughtfully designed, making this community a true oasis.

About the Hollowdale Community.

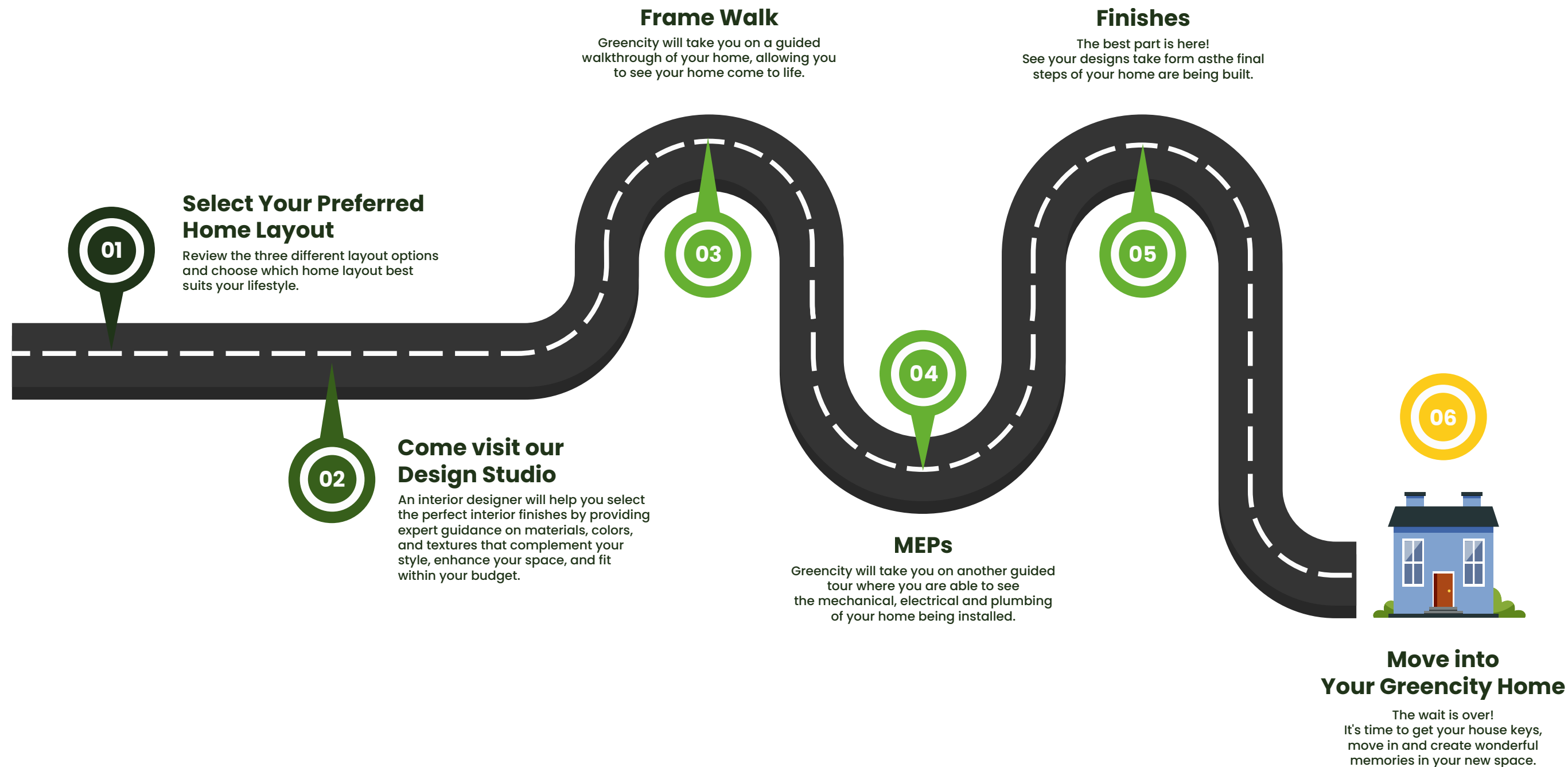
Located in Everett's Fairmont neighborhood, this community is tucked into the residential pocket known for its quiet, suburban atmosphere and well-established homes. Characterized by tree-lined streets and a close-knit community feel, it's a popular choice for growing households and individuals seeking a peaceful living environment. Conveniently located near local amenities, parks, and schools, this location offers a blend of convenience and tranquility.

Additionally, Hollowdale's proximity to downtown Everett, I-5 and Highway 99 provide easy access to shopping, dining, and entertainment options while maintaining a sense of seclusion from the busier parts of the city. For those who have an eye for shopping, the Everett Mall offers a variety of entertainment, including retail stores, small boutiques, grocery options and the Regal Everett Movie Theater.



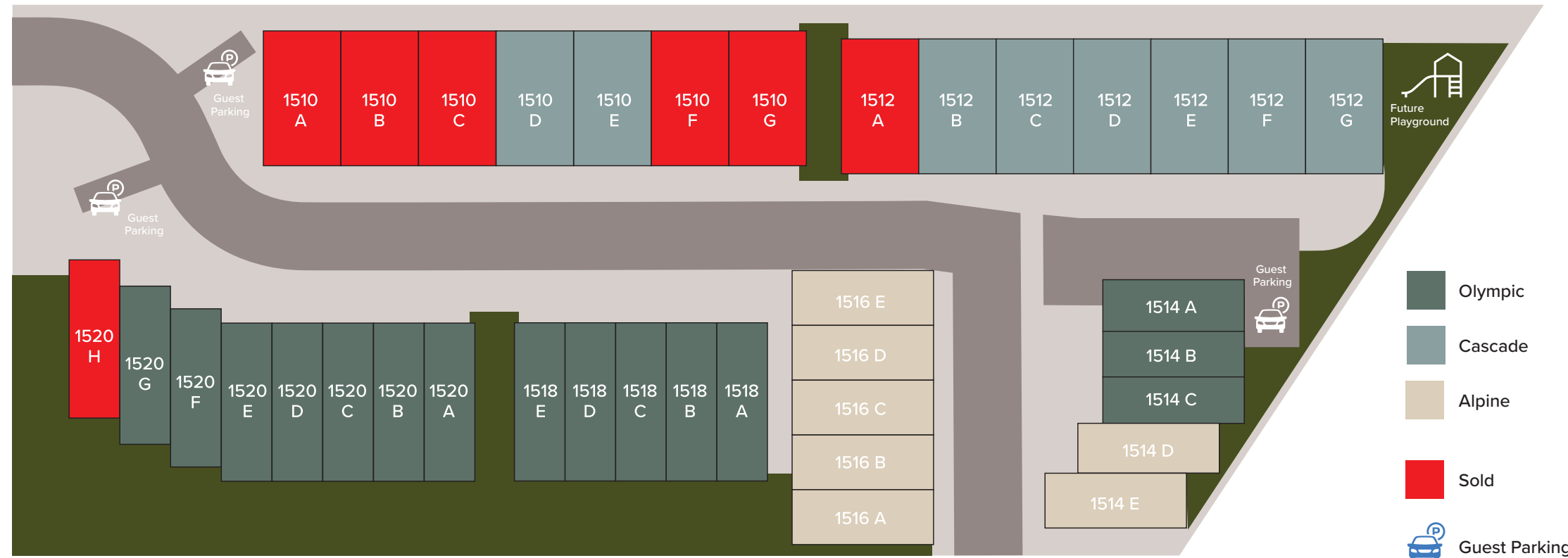
What are the steps to YOUR new home?

We are glad that you choose Greencity
Let walk and work together during this journey



BOULEVARD

A T H O L L O W D A L E



Choose your home

Unit Type Cascade - 2 Story unit

SQFT: 1614

3 bedrooms

2 ½ bathrooms

2 Garage Stalls

Unit Type Olympic - 3 Story unit

SQFT: 1702

3 bedrooms

3 ¼ bathrooms

1 Garage Stalls, 1 Surface Stalls

Unit Type Alpine - 3 Story unit

SQFT: 1397

2 bedrooms

3 bathrooms

2 Garage Stalls

Choose Your Floor Plan

With over 37 floor plans to choose from there is something for everyone.



Unit Type Cascade

1614_{SF} |  3 |  2 ½ |



2nd floor



1st floor

Unit Type Olympic

1702_{SF} |  3 |  3 ¼ |



3rd floor



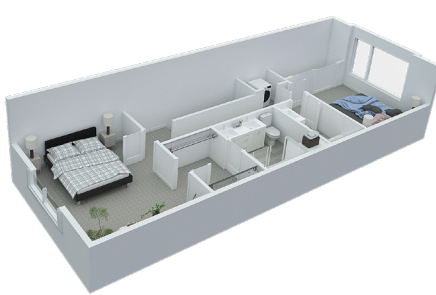
2nd floor



1st floor

Unit Type Alpine

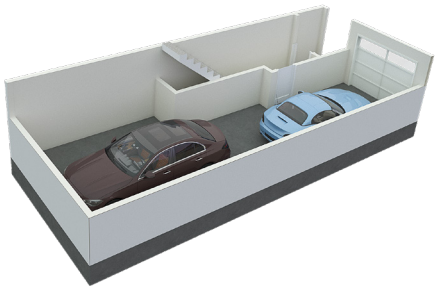
1397_{SF} |  2 |  3 |



3rd floor



2nd floor



1st floor



The Surrounding Area



Tons of restaurants, bars and shops



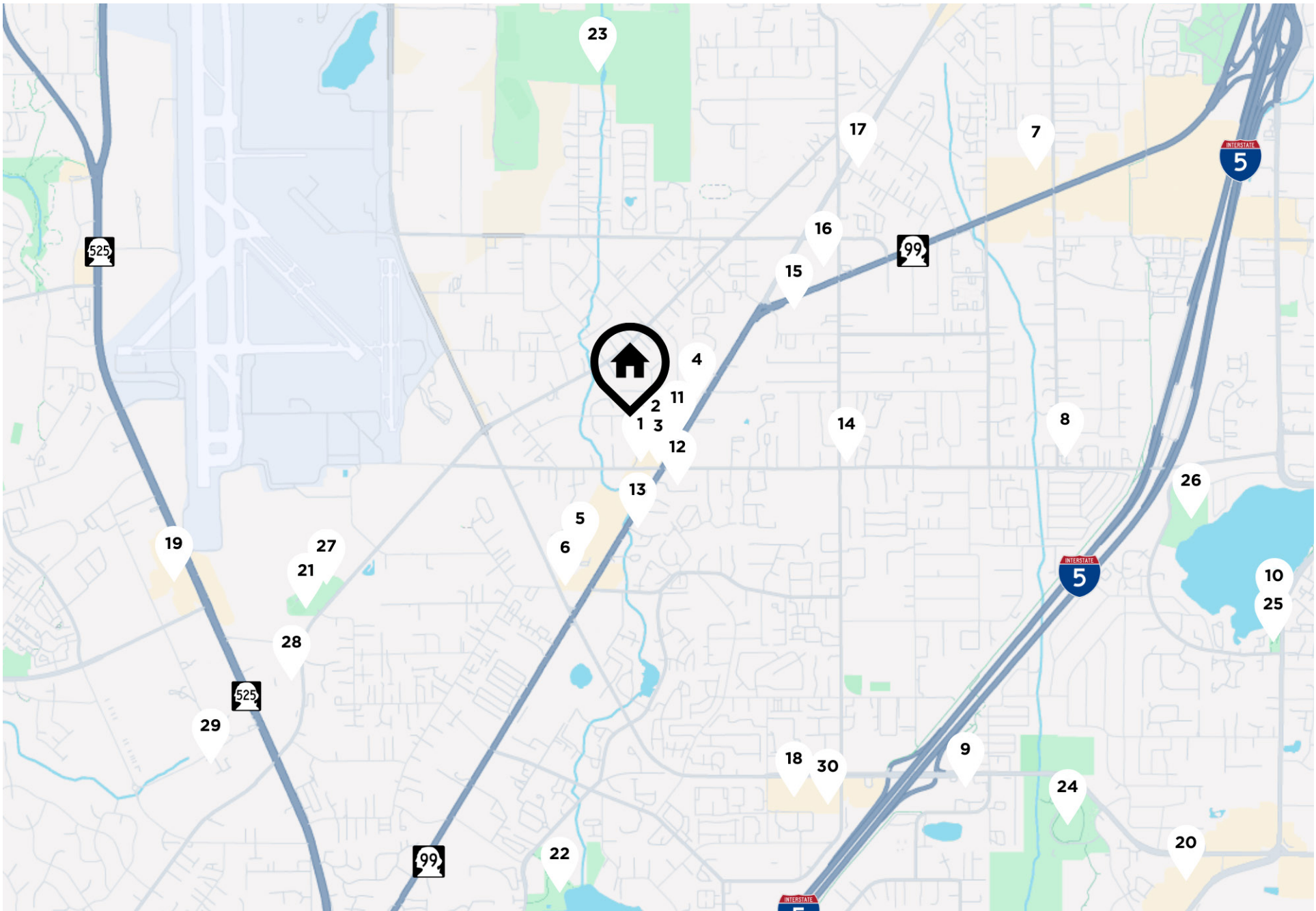
3 min from Paine Field



Silver Lake & Local Parks



Surrounding Neighborhoods & More



The Surrounding Area

Greencity Favorites



EATERIES

- 1. Enseamada Cafe
- 2. Oshima Sushi
- 3. Zab Thai Restaurant
- 4. Avocados Mexican Restaurant
- 5. Yoshi Teriyaki
- 6. La Palmera Family Mexican Restaurant
- 7. Middleton Brewing
- 8. Silverlake Pizza & Pasta
- 9. Shawn O'Donnell's Grill & Irish Pub
- 10 . Emory's on Silver Lake



DAILY CONVENIENCES

- 11. Alem Grocery
- 12. AMPM
- 13. Imran's Market
- 14. Mariner Food Mart
- 15. Star Fruits & Vegetables
- 16. Grocery Outlet
- 17. Pacific Grocery Market
- 18. Safeway
- 19. QFC
- 20. Sprouts Farmers Market



PARKS & ENTERTAINMENT

- 21. Paine Field Community Park
- 22. Lake Stickney Park & Off-Leash Dog Park
- 23. Loganberry Lane Park
- 24. McCollum Forest Park & Athletic Fields
- 25. Hauge Homestead Park
- 26. Thornton A. Sullivan Park
- 27. High Trek Adventures
- 28. Vertical World North
- 29. Bellevue Badminton Club - Mukilteo
- 30. Mariner Library - Sno-Isle Libraries



EDUCATION

- Fairmount Elementary School
- Explorer Middle School
- Mariner High School
- Washington Aerospace Training & Research Center
- Everett Community College Aviation Maintenance
- Sno-Isle Tech Skills Center

Got Questions?
Speak with our team.

Community location:

1510, Hollow Dale Place,
Everett, WA, 98204



Listing Agents
Rebecca Mitsul & Tom Skepetaris
email@tomandrebecca.com
(206) 935-6262



Preferred Lender
Bret Eickhoff
bret@breteickhoff.com
(425) 241-8082



Scan to learn more