



THE AXIS COMMUNITY

Explore our extensive range of
beautiful home designs.



955 N 35th Street
Seattle, WA 98103

GreencityHomes.us

A modern townhome building with a dark green overlay containing text. The building features a mix of light blue vertical siding, white horizontal siding, and large windows. A person is walking on the sidewalk to the right, and a blue car is visible in the background on the left.

A new community with so much to offer.

Welcome to the Axis Collection by Greencity—a collection of seven architecturally refined townhomes in one of Seattle’s most dynamic and sought-after neighborhoods. Perfectly positioned near the sparkling shores of Lake Union, Axis offers a sophisticated retreat with effortless access to Fremont’s thriving tech hub, eclectic dining, and boutique shopping. Thoughtfully designed, each home blends contemporary elegance with seamless connectivity—just moments from an array of entertainment options, scenic parks, and the energy of the city.







Choose your model home.

AXIS COMMUNITY LUXURY TOWNHOMES

1,372 - 1,986 Sq. Ft.

2-3 BEDROOMS

2.25-3.25 BATHROOMS

4-STAR BUILT GREEN

BREATHTAKING VIEWS

CURATED COLOR PALETTES

PREMIUM FIXTURES &
FINISHES

GARAGE/EV-READY PARKING
FOR SELECT HOMES

Choose Your Floor Plan

With seven exclusive residences available, there's a floorplan to suit a variety of lifestyles. Choose from thoughtfully crafted floorplans featuring 2 or 3 bedrooms, each showcasing refined color palettes and breathtaking views. Whether you're seeking expansive living spaces or intimate retreats, find the ideal home that suits your unique style & vision.




* All images used are for illustrative purposes only and are intended to convey the concept and vision for the home. They are for guidance only, may alter as work progresses and do not necessarily represent a true and accurate depiction of the finished product.

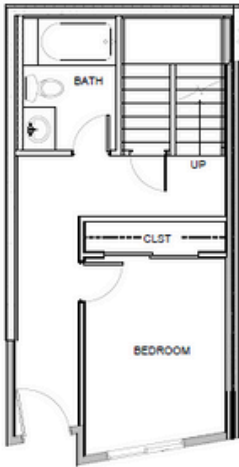




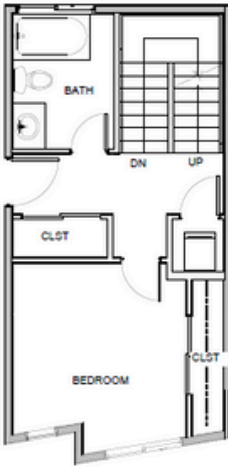
Floor Plan One

3421

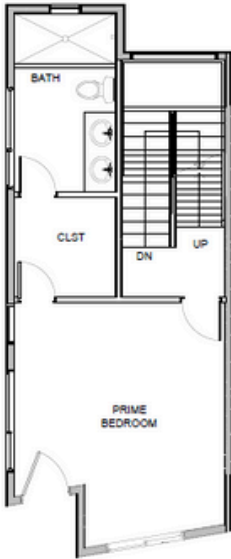
1986 SF  3  3.25  1



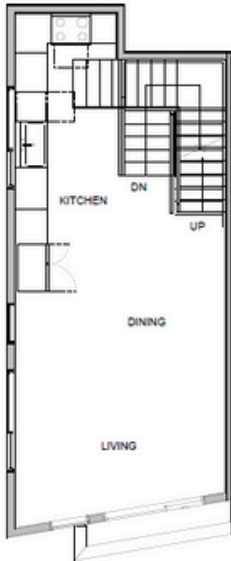
BASEMENT FLOOR PLAN



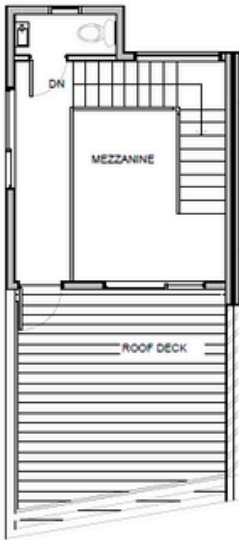
FIRST FLOOR



SECOND FLOOR



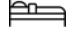

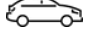
THIRD FLOOR



ROOF DECK

Floor Plan Two

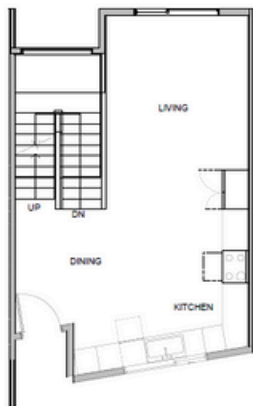
3423

1630 SF |  2 |  2.25 |  1

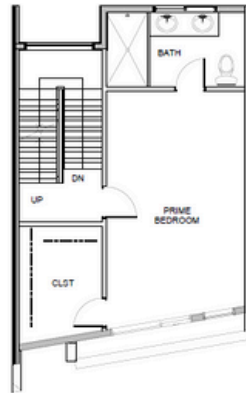


BASEMENT FLOOR PLAN

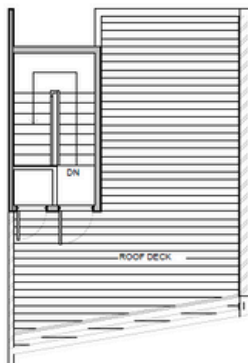
FIRST FLOOR



SECOND FLOOR





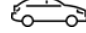
THIRD FLOOR

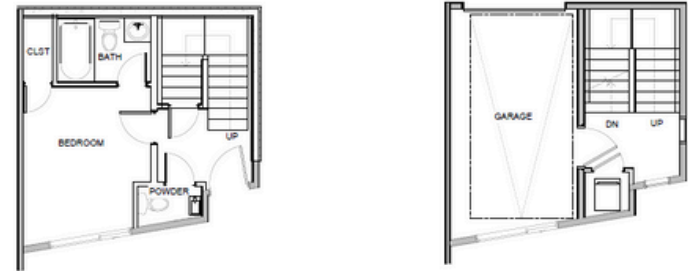


ROOF DECK

Floor Plan Three

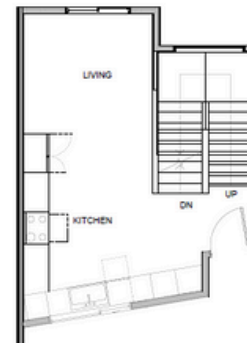
3425

1372 SF |  2 |  2.25 |  1



BASEMENT FLOOR PLAN

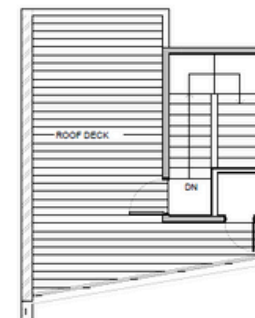
FIRST FLOOR



SECOND FLOOR



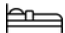


THIRD FLOOR



ROOF DECK

Floor Plan Four

3427

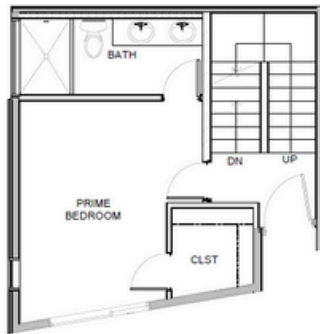
1531_{SF} |  3 |  2.75 |  1



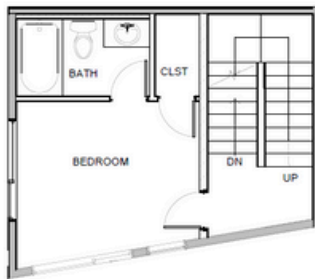
FIRST FLOOR



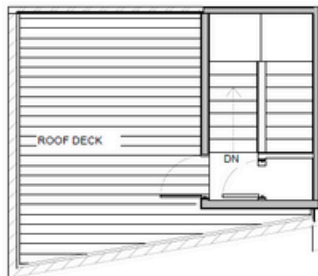
SECOND FLOOR



THIRD FLOOR






FOURTH FLOOR

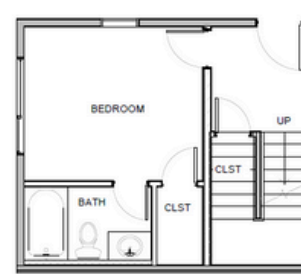


ROOF DECK

Floor Plan Five

953

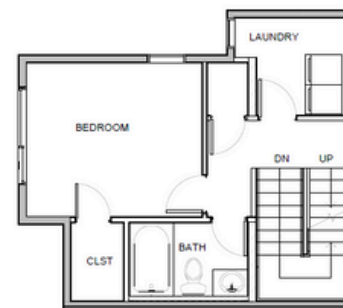
1650_{SF} |  3 |  2.75 |  1



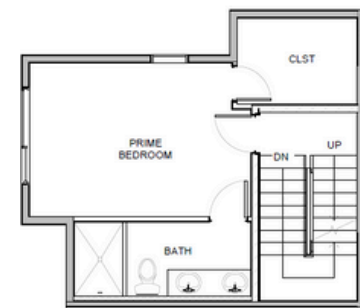
FIRST FLOOR



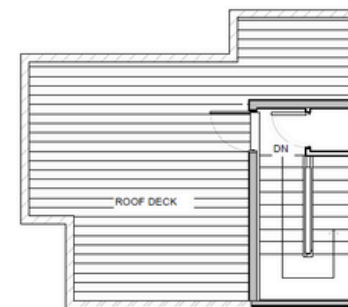
SECOND FLOOR



THIRD FLOOR




FOURTH FLOOR

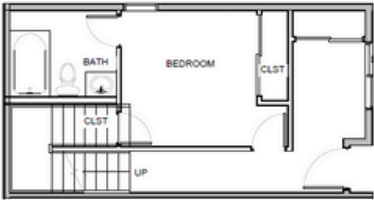


ROOF DECK

Floor Plan Six

955

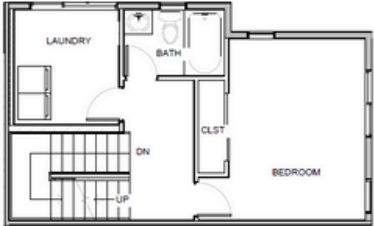
1786_{SF} |  3 |  2.75 |  1



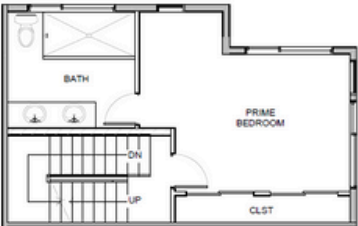
FIRST FLOOR



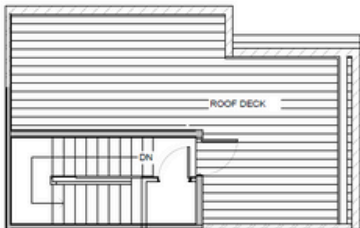
SECOND FLOOR



THIRD FLOOR



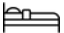


FOURTH FLOOR

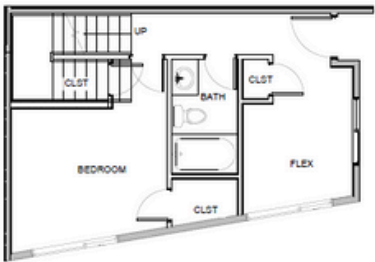


ROOF DECK

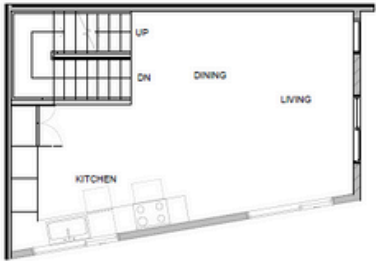
Floor Plan Seven

957

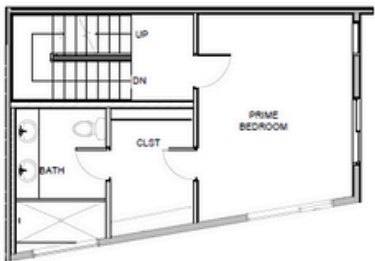
1785_{SF} |  3 |  2.75 |  1



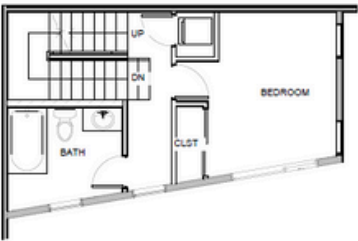
FIRST FLOOR



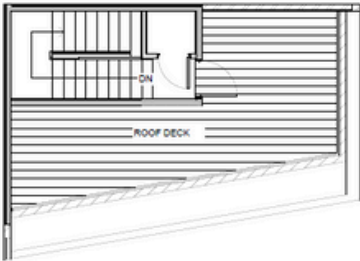
SECOND FLOOR



THIRD FLOOR

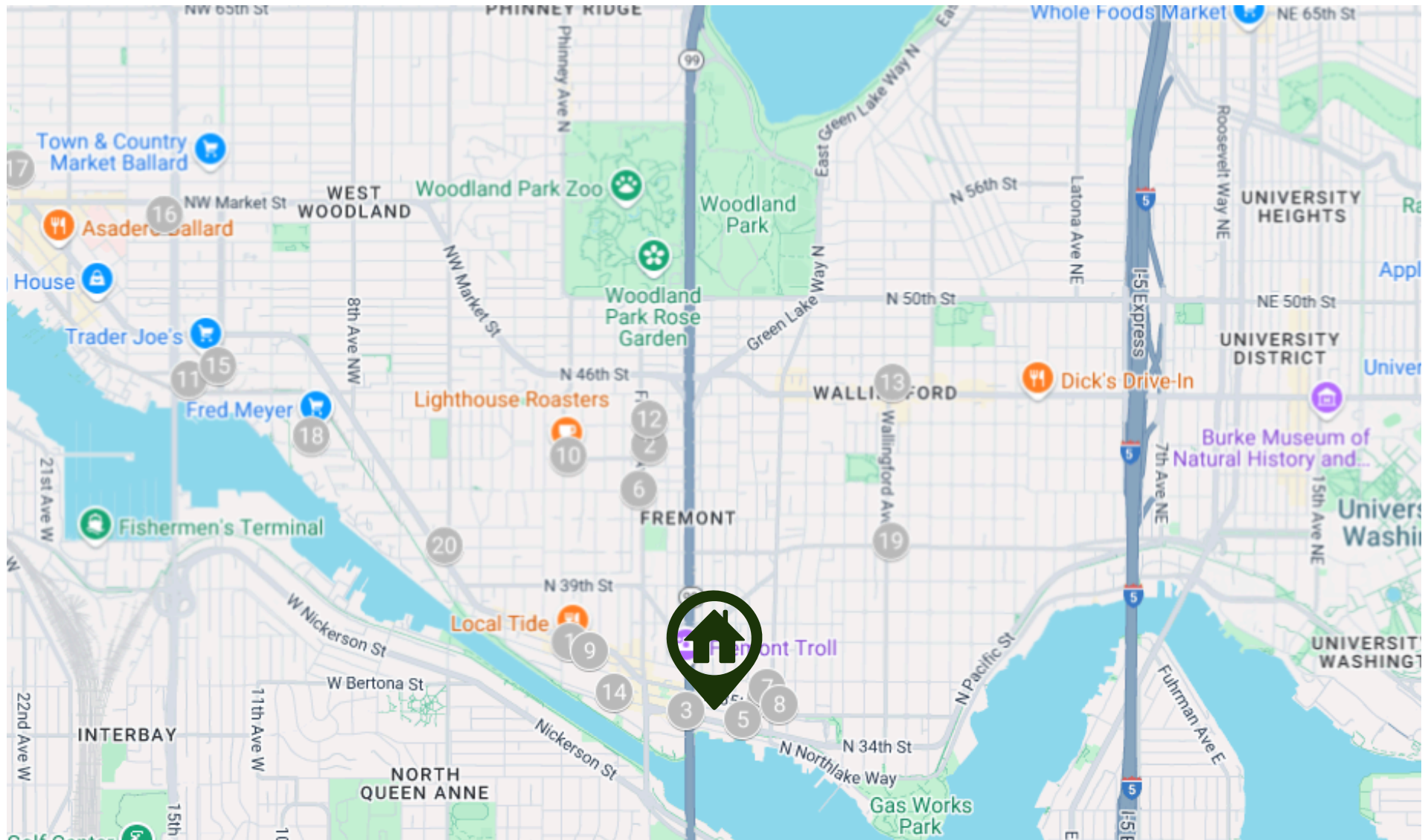


FOURTH FLOOR



ROOF DECK

The Surrounding Area



Greencity Favorites



EATERIES

1. Revel
2. Rock Creek Seafood & Spirits
3. Milstead & Co.
4. Figurehead Stone Way
5. Fremont Brewing Company
6. Le Coin
7. Stone Way Cafe
8. The Whale Wins
9. Fremont Coffee Company
10. Lighthouse Roasters



DAILY CONVENIENCES

11. PCC Community Market
12. Marketime Foods
13. QFC
14. Fremont Sunday Market
15. Trader Joes
16. Walgreens
17. Bartell Drugs
18. Fred Meyer
19. Durn Good Grocery
20. Shell



PARKS & ENTERTAINMENT

1. Gas Works Park
2. Fremont Canal Park
3. Woodland Park Zoo
4. Burke-Gilman Trail
5. Seattle Center
6. Museum of Pop Culture (MoPOP)
7. Chihuly Garden and Glass
8. Burke Museum of Natural History
9. Ballard Locks
10. Green Lake Park

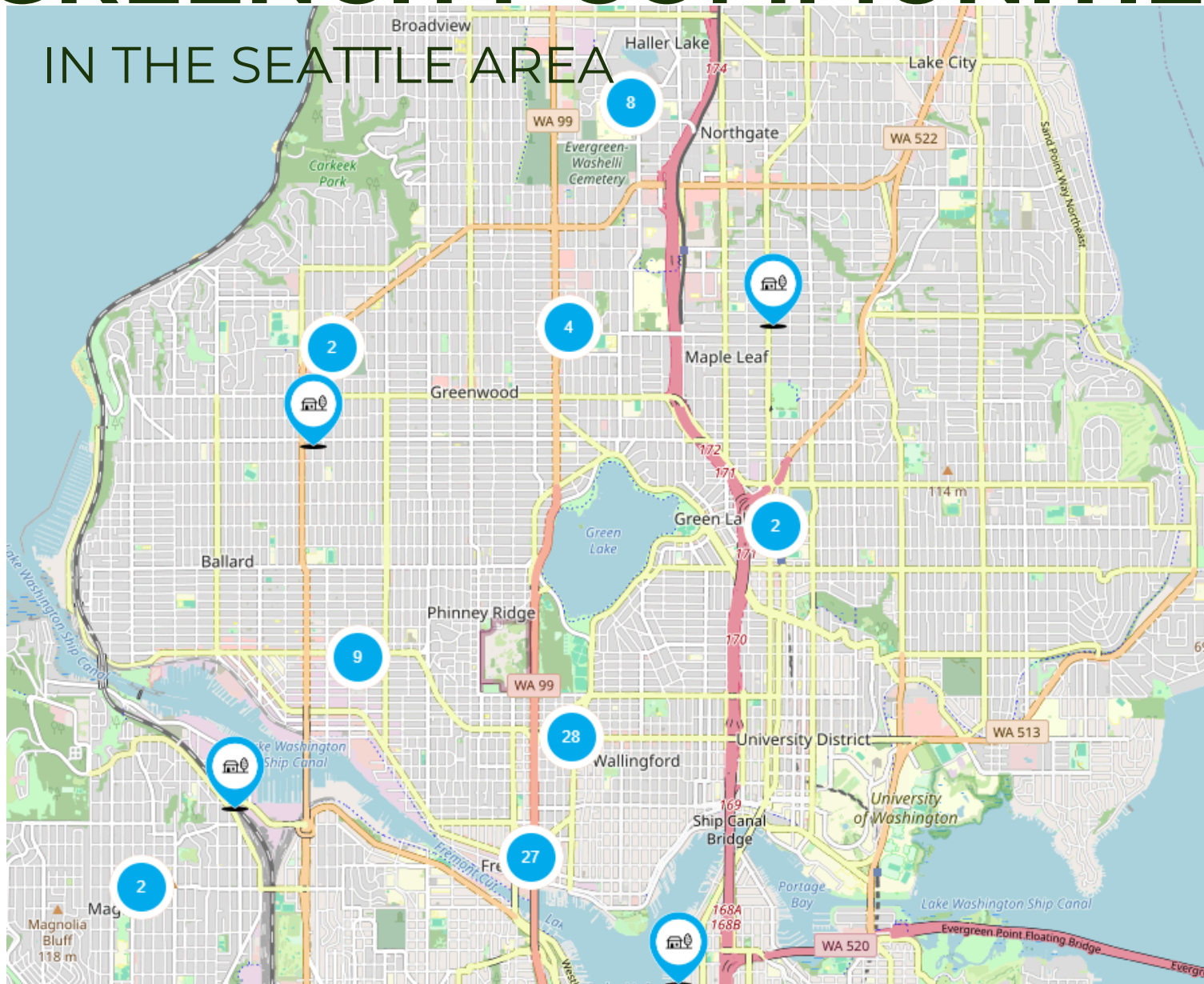


SCHOOLS

1. B.F. Day Elementary School
2. John Stanford International School
3. Hamilton International Middle School
4. Eckstein Middle School
5. Ballard High School
6. Roosevelt High School
7. Lakeside School
8. University Prep
9. University of Washington
10. Seattle Pacific University

GREENCITY COMMUNITIES

IN THE SEATTLE AREA



Have Questions? Speak with our team.

Community location:

955 N 35th Street
Seattle, WA 98103



Listing Agent

Grecia Thomas
gthomas@rpare.com
(425) 583 -6101



Co-Listing Agent

Julie Elli
jelli@rpare.com
(206) 612-2262



Preferred Lender

Bret Eickhoff
bret@breteickhoff.com
(425) 241-8082



Scan to learn more

