



ASPYN

Explore our extensive range of
beautiful home designs.

 18011 - 18017 2nd Ave NE,
Shoreline, WA, 98155

GreencityHomes.us



A new community with so much to offer.

Introducing Greencity Homes' latest community in Meridian Park—The Aspyn is a collection of 12 newly constructed three-bedroom townhomes designed for modern living and comfort.



About the Aspyn Community.

Located in the heart of Shoreline, these homes feature expansive ceiling heights from the main living areas with mezzanine levels that overlook the inviting living spaces. The well-appointed kitchens come with the latest matte grey Bosch appliances and stunning cabinetry packages.

Select homes offer outdoor patio spaces off the entry level and every home enjoys one car garages.

Each spacious primary suite includes its own private balcony, vaulted ceilings and access to private rooftop decks, offering a serene retreat for relaxation.

Discover the exceptional features and contemporary style of the Aspyn in Meridian Park by Greencity Homes.



Choose your model home.

SHORELINE TOWNHOMES

- 1,194 - 1656 SQ FT
- BEDROOMS: 3
- BATHROOMS: 2.25 - 2.75
- 4-STAR BUILT GREEN
- PREMIUM MATTE GREY BOSCH APPLIANCE PACKAGES
- EV-READY GARAGE
- SOARING LIVING ROOM CEILINGS WITH LOFTED MEZZANINE LEVELS
- EASY COMUTE TO DOWNTOWN SEATTLE, CLOSE TO SHOPS, EATERIES & COFFEE SHOPS, AND CLOSE TO RIDGECREST & MERIDIAN PARK

Choose Your Floor Plan

Choose from 12 thoughtfully designed units, you're sure to find your ideal home.

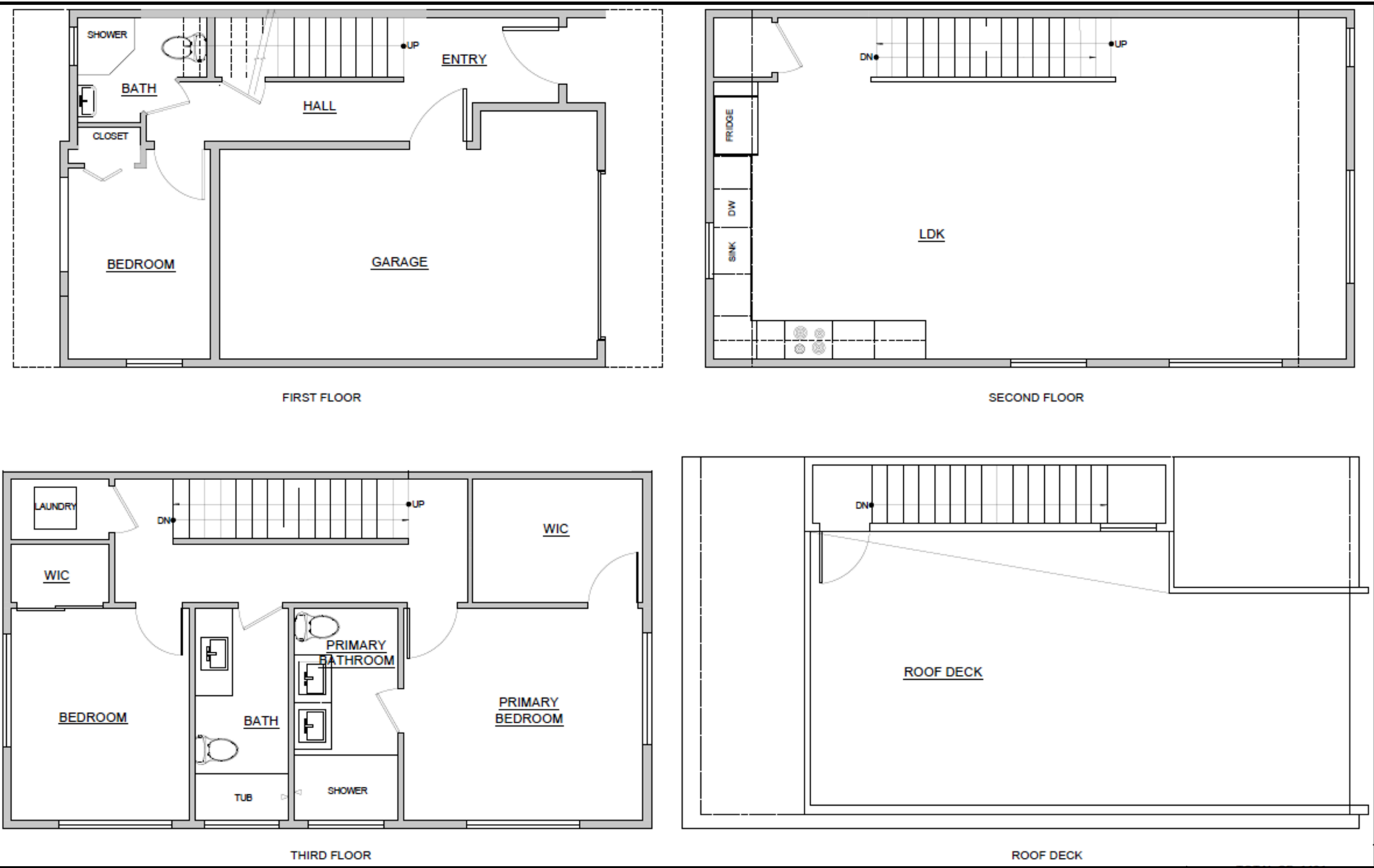
* All images used are for illustrative purposes only and are intended to convey the concept and vision for the home. They are for guidance only, may alter as work progresses and do not necessarily represent a true and accurate depiction of the finished product



FLOOR PLAN ONE

18011 A - C

3 2.5 1,481-1,598 1-CAR GARAGE



FLOOR PLAN TWO

18013 A - C

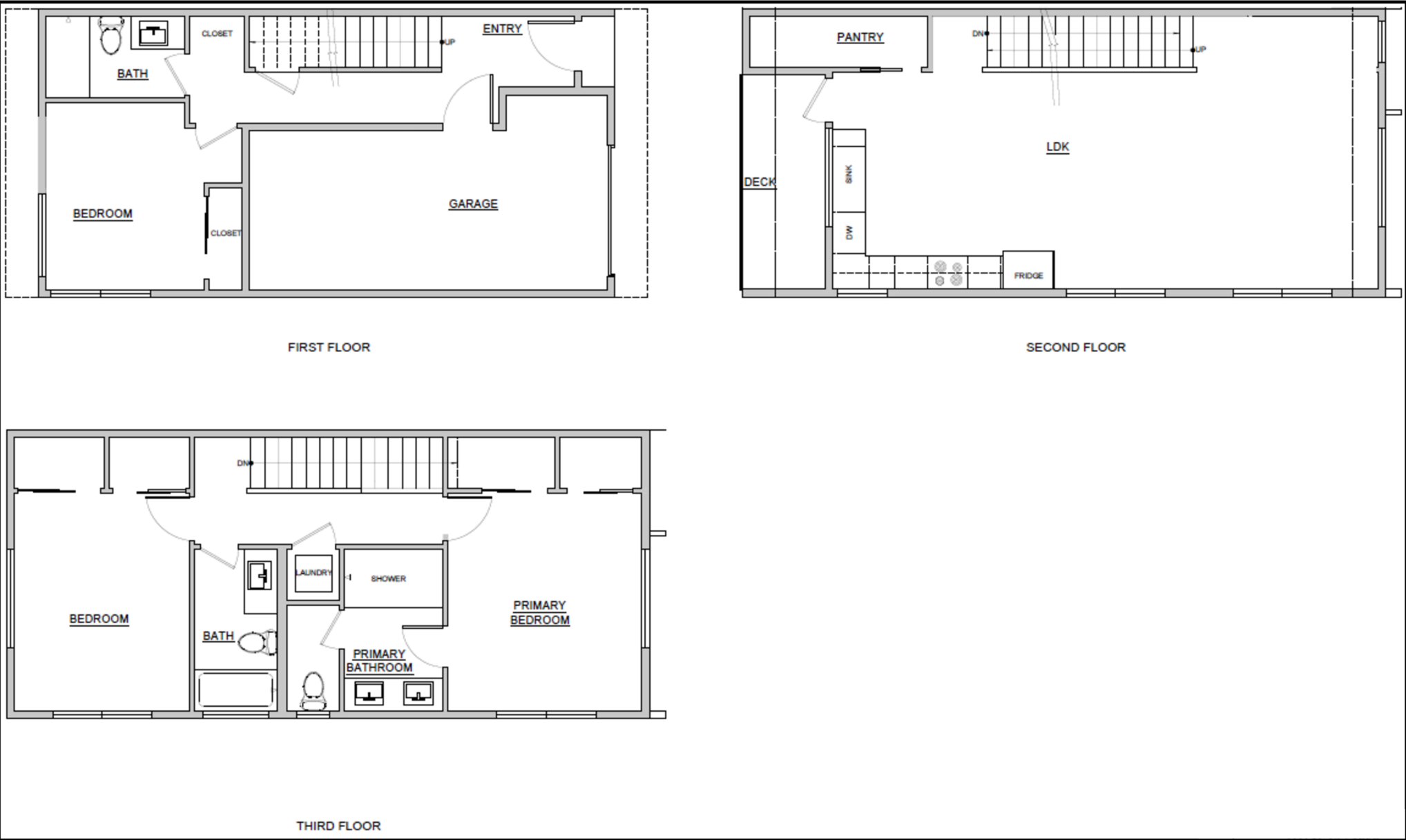
3 2.25 1,383 1-CAR GARAGE



FLOOR PLAN THREE

18015 A - C

3 2.5 1,347 -1,656 1-CAR GARAGE



FLOOR PLAN FOUR

18017 A - C

3 2.25 1,194 - 1,510 1-CAR GARAGE



Green City Favorites



EATERIES

- Drumlin
- Spiro’s Pizza & Pasta
- North City Bistro & Wine Shop
- Peking House
- Blackbird



DAILY CONVENIENCES

- Trader Joe’s
- Town & Country Market
- Safeway
- Costco
- Amen
- Fred Meyer
- Plaza Latina



PARKS & ENTERTAINMENT

- Cromwell Park
- Ronald Bog Park
- Shoreview Park
- Richmond Beach Park
- Twin Ponds Park



SCHOOLS

- Meridian Park Elementary
- Shorenorth Co-Op Preschool
- Shorewood High School
- Parkwood Elementary
- Kellog Middle School
- King’s Junior High
- Shorecrest High School

Got Questions? Speak with our team.

Community location: 18011 - 18017 2ND Ave NE,
Shoreline, WA, 98155



Preferred Lender
Bret Eickhoff, MBA
Cornerstone Home Lending
bret@breteickhoff.com
425-241-8082



Preferred Agent
Tom Skepetaris & Rebecca Mltsui
Realogics Sothebys
email@tomandrebecca.com
206-935-6262

Greencity Homes reserves the right to change or amend plans and specification without prior notice. Specifications may vary per plan. All dimensions are approximate. Information is deemed to be correct but not guaranteed.

