



INNOVA ESTATES

COMING SPRING 2024



ABOUT

INNOVA ESTATES

Where Innovation meets Luxury to Create an Oasis of Modern Living



Welcome to Innova Estates, a small enclave of 24 meticulously crafted modern homes offering thoughtfully designed floor plans and high quality luxury finishes.

Greencity is a group of passionate people who buy & develop land with the intent to better people's lives by creating high quality, community-focused living experiences.

At Greencity we strive to create a burden-free process within our industry that benefits our customers, our contractors and the environment.

At Greencity, we believe blessed builders create the best homes.





THREE PILLARS

24 HOMESITES AVAILABLE

All sites over 1/2 acre

1. COMMUNITY



At Innova Estates, one of our founding pillars is Community. We strive to create a beautiful neighborhoods that you love to come home to! We will have an HOA management company which will work for you by keeping the grounds maintained and enforcing a few rules that will keep everyone’s properties looking nice thus protecting every owner’s property values. High speed internet is also included in your HOA dues, making it one less bill for you to pay each month. Our HOA management company is Roland Management, a small family owned company local to Spartanburg which offers exceptional service and convenience in making payments.

2. OASIS

Another founding pillar is Oasis. Tucked back off Clark Road with a long beautifully landscaped front entrance that has been intentionally designed to create the feeling of entering into a Luxurious Oasis.





THREE PILLARS



Cabinets



Counter Tops



Lighting



Flooring



Tile

3. FUNCTIONALITY

Customize what is important to you and design the functional home of your dreams.

Choose from seven modern floor-plans, and pick your exterior and interior colors.

Multiple flooring choices with luxury vinyl plank in four colors with options to upgrade to high quality laminate plank or hardwood.

Design your kitchen, choose your cabinets, quartz counter tops, and backsplash tiles to create your dream kitchen.

Sleek, modern hardware and lighting fixtures with a choice of matte black or brushed gold.

Ceramic tile bathroom floors with multiple styles, colors and sizes of tiles to choose from. Customize your primary bathroom shower with several tile colors, sizes and styles. Upgrade with benches, niches and a curbless shower.

Covered back porches give you a functional indoor outdoor living space.

Luxurious upgrades available from towel warmers to waterfall islands and even outdoor kitchens!



FINISHES



- ⦿ Exteriors Crafted with an Exquisite Blend of Hardboard Siding, Cement, Stone and Timber
- ⦿ Architectural Shingle Roofs
- ⦿ Energy Efficient Windows
- ⦿ Tankless Water Heater
- ⦿ Luxury Vinyl and Ceramic Tile Flooring
- ⦿ Flat Front European Cabinets
- ⦿ Elegant Quartz Counters
- ⦿ Black Stainless Samsung Appliances
- ⦿ Floating Bathroom Vanity
- ⦿ Waterfall Shower Heads
- ⦿ Minimum Nine Foot Ceilings



MODERN & FUNCTIONAL FLOOR PLANS

01 The Harrison



3 Beds. 2 Baths. 3 Car Garage. 1923 sqft.

02 The Evergreen



3 Beds. 2 Baths. 2 Car Garage. 1947 sqft.

03 The Pine



3 Beds. 3 Baths. 2 Car Garage. 2233 sqft.

04 The Arctic



3 Beds. 3 Baths. 2 Car Garage. 2591sqft.

05 The Ridgeline



4 Beds. 3.5 Baths. 2 Car Garage. 2671 sqft.

06 The Fairview



4 Beds. 2.5 Baths. 2 Car Garage. 2722 sqft.

07 The Pellum



4 Beds. 2.5 Baths. 2 Car Garage. 2831 sqft.



ABOUT THE AREA

INNOVA ESTATES



DIRECTIONS

- I-85 to I-26 West
- I-26 West to Exit 15
- Right on US-176
- Right on Bishop Rd
- Left on Clark Rd
- Innova Estates on the Left

LOCATION

- Inman Downtown - 3 min
- Spartanburg Downtown - 20 min
- GSP International Airport - 22 min
- Greer Downtown - 25 min
- Greenville Downtown - 37 min
- Asheville, NC - 1hr
- Charlotte, NC - 1hr 20 min
- Myrtle Beach, SC - 4 hours

ATTRACTIONS

- Tryon International Equestrian Center
- Inman Theater
- Woodfin Ridge Golf Club
- BMW Zentrum
- The Peace Center
- Falls Park on the Reedy
- Children's Museum of the Upstate
- Coming soon: Saluda Grade Rail Trail

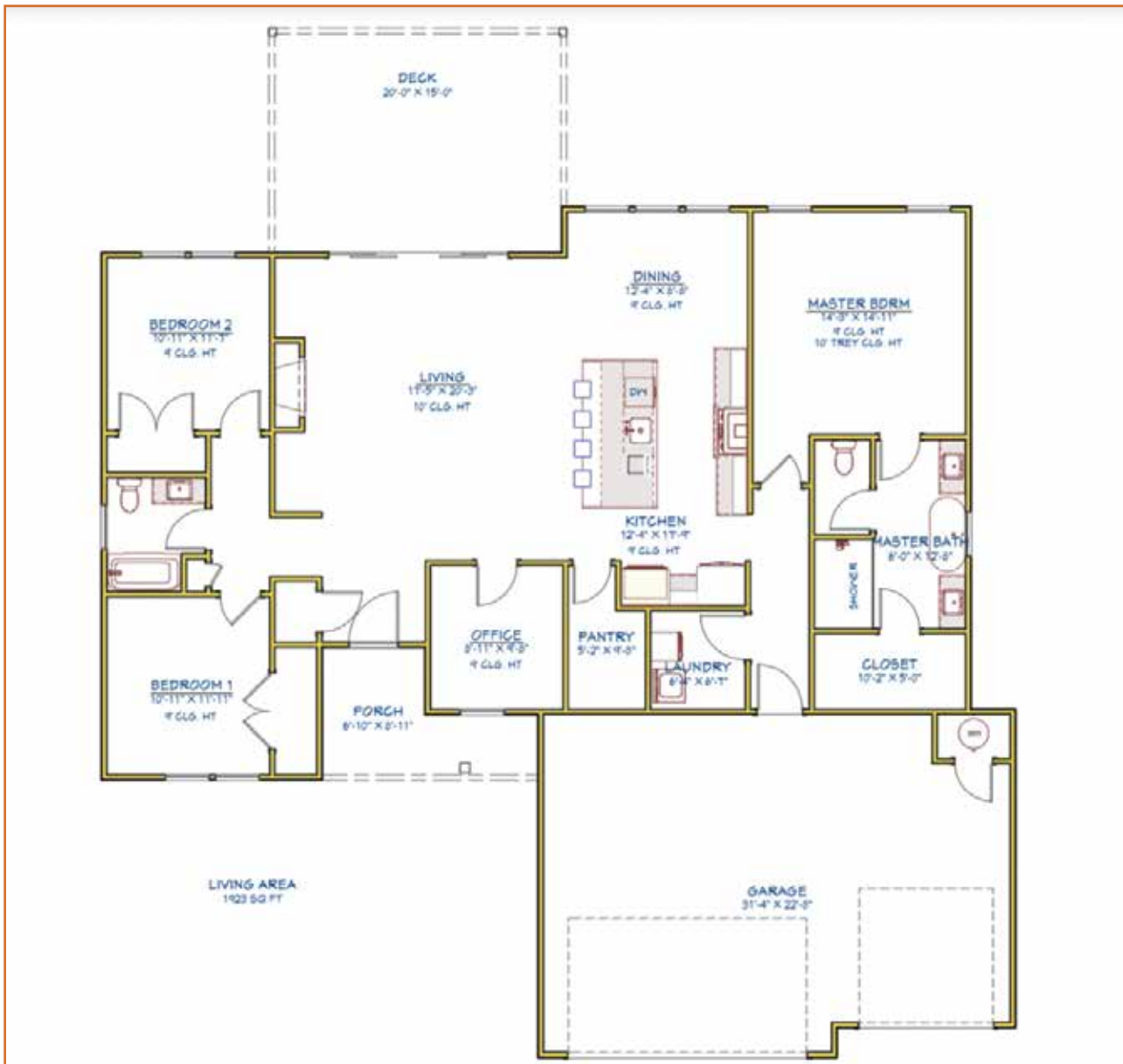
SCHOOLS

- Spartaburg County District 1
- Inman Elementary
- Inman Intermediate
- TE Mabry Middle
- Chapman High



THE HARRISON

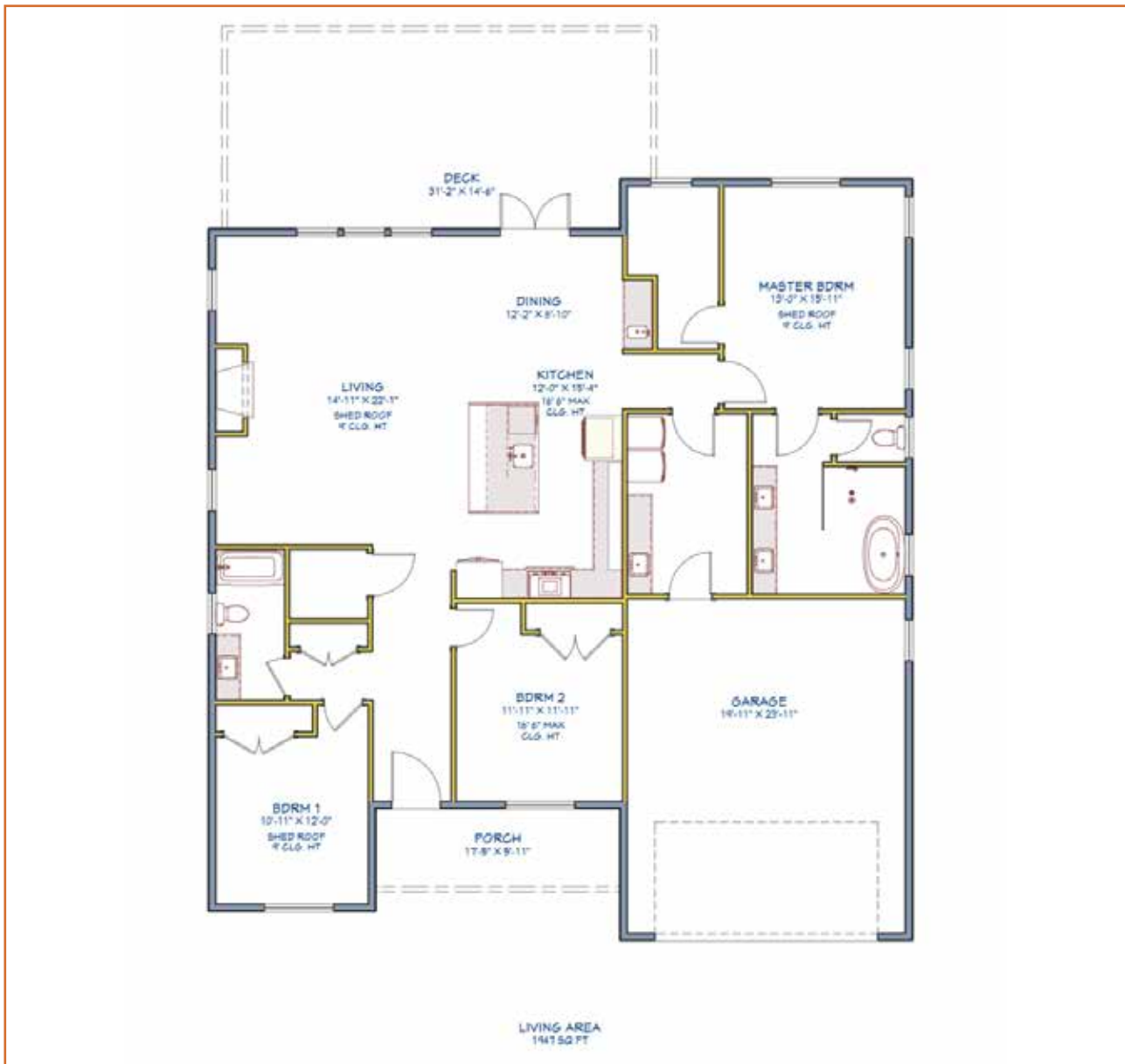
3 Beds. 2 Baths. 3 Car Garage.
1923 sqft





THE EVERGREEN

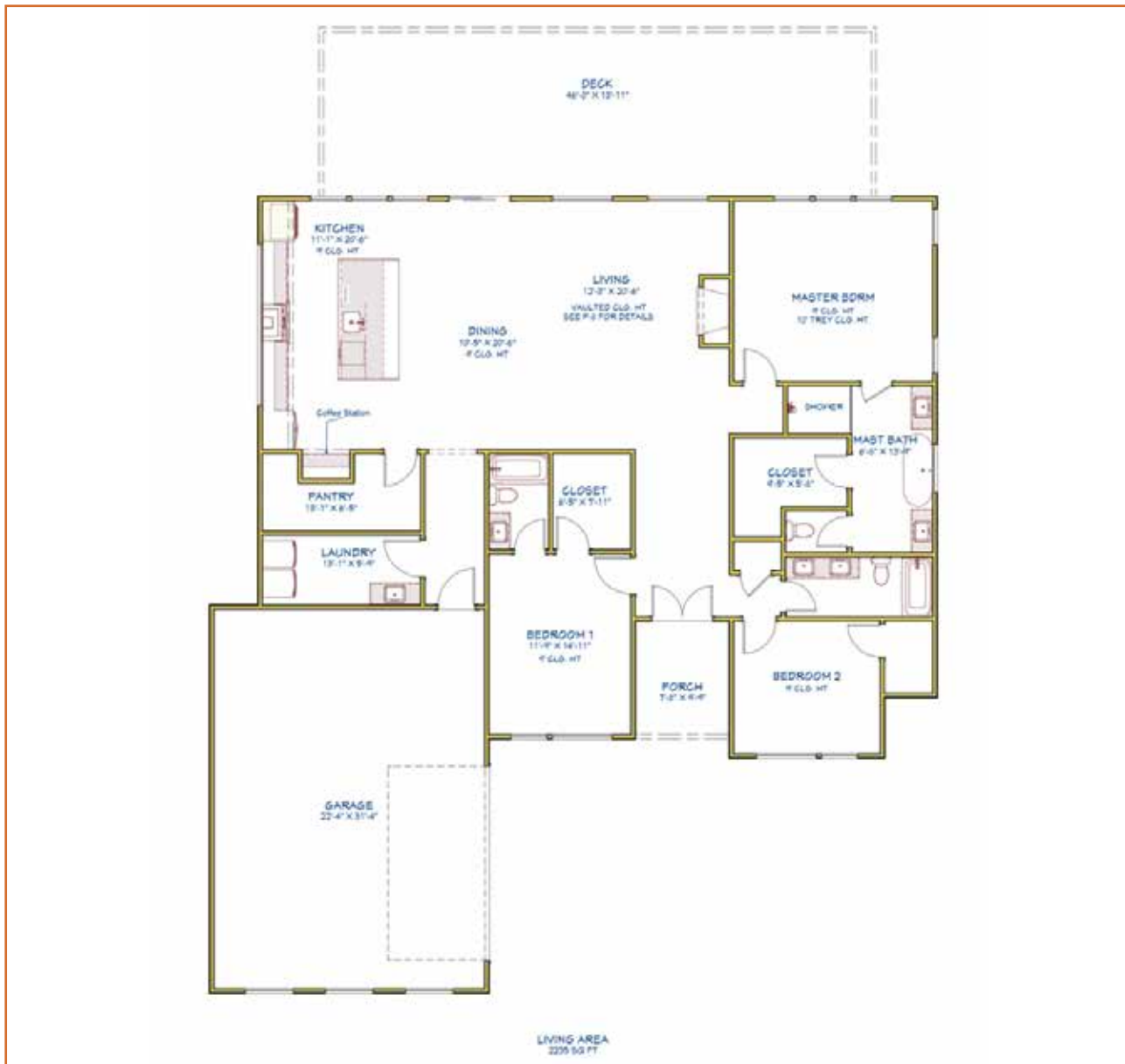
3 Beds. 2 Baths.
1947 sqft





THE PINE

3 Beds. 2 Baths.
2235 sqft





THE ARCTIC

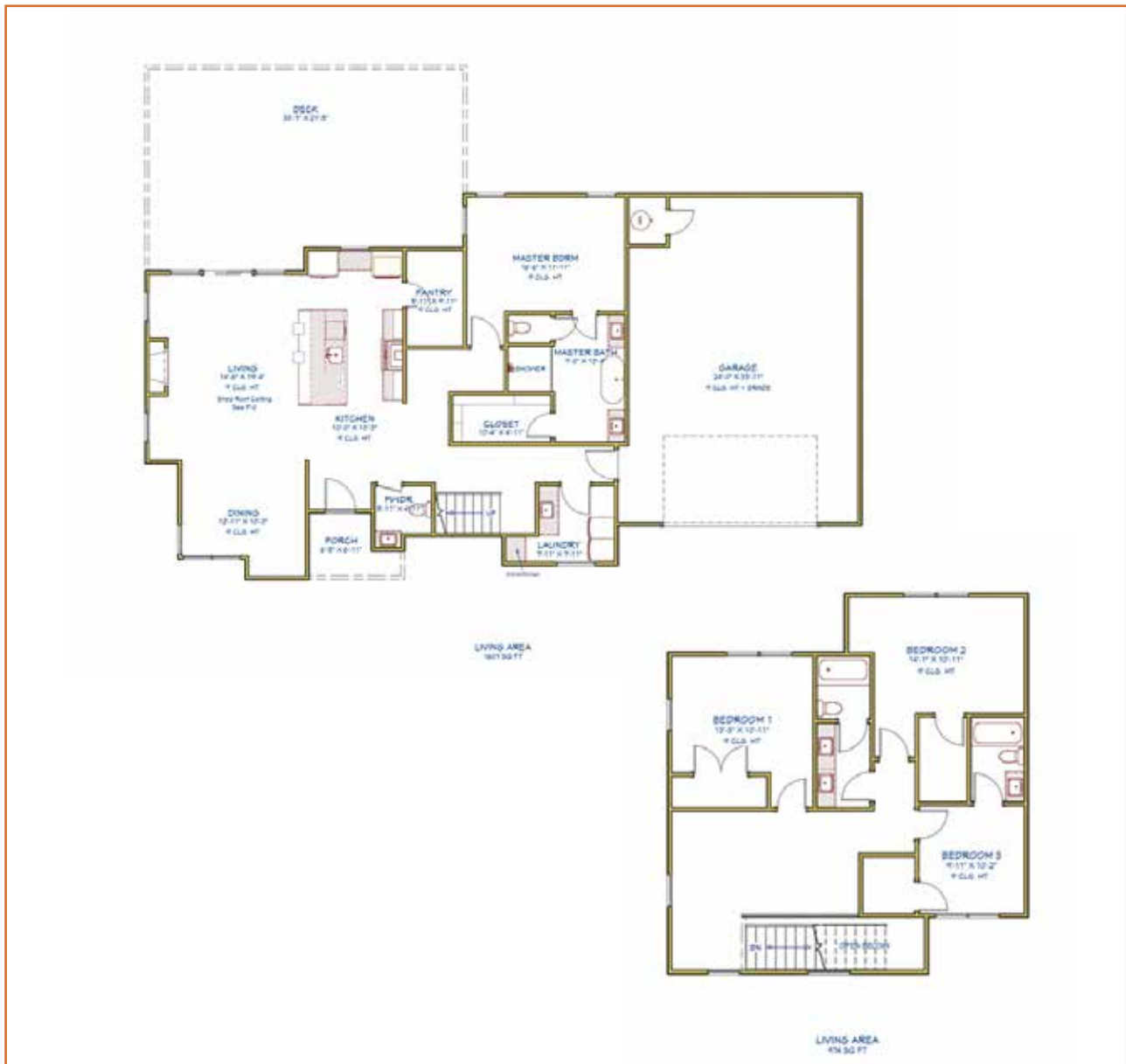
3 Bedrooms. 3 Bathrooms.
2591 sqft





THE RIDGELINE

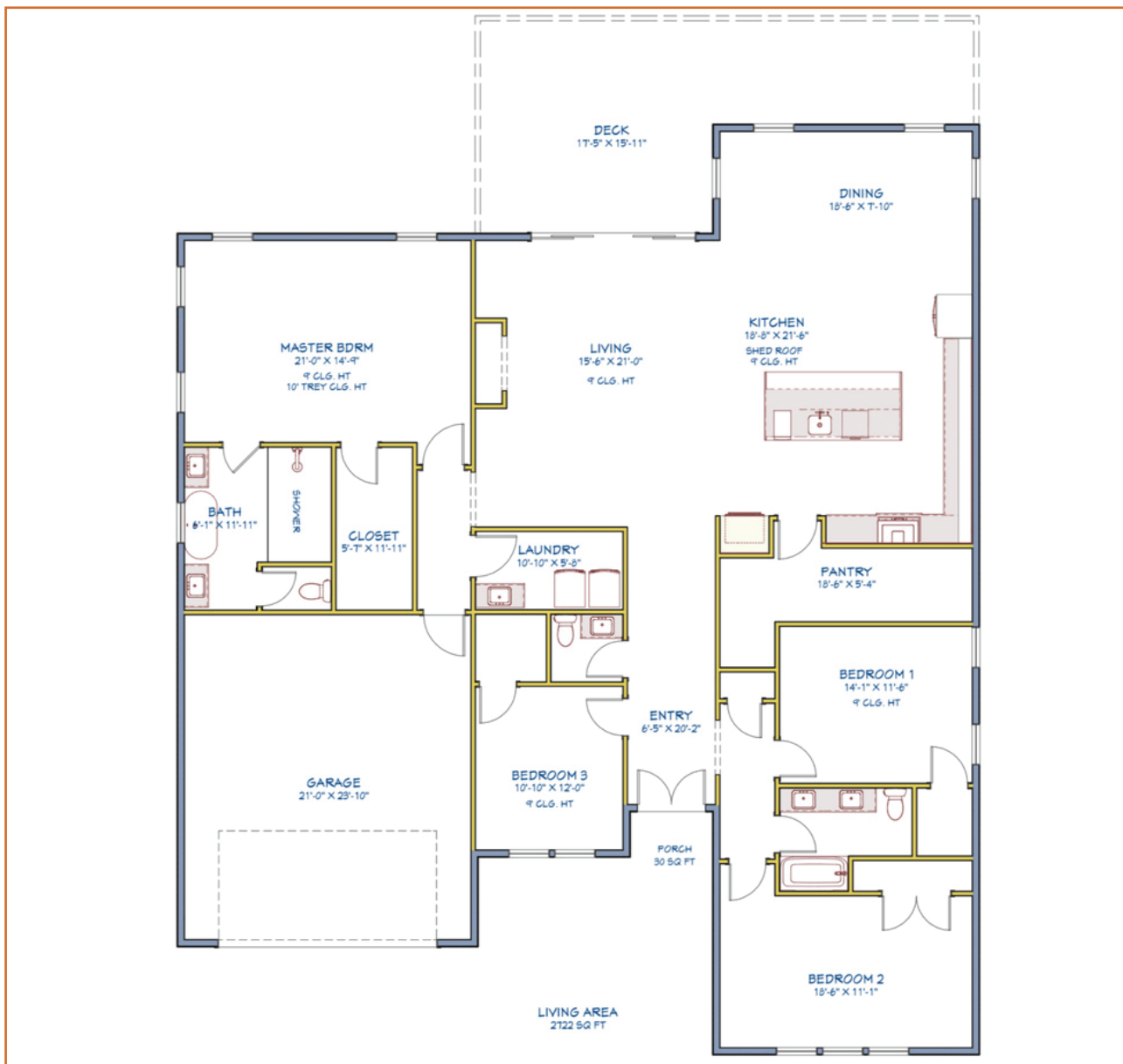
4 Beds. 3.5 Baths. 2 Story.
2581 sqft





THE FAIRVIEW

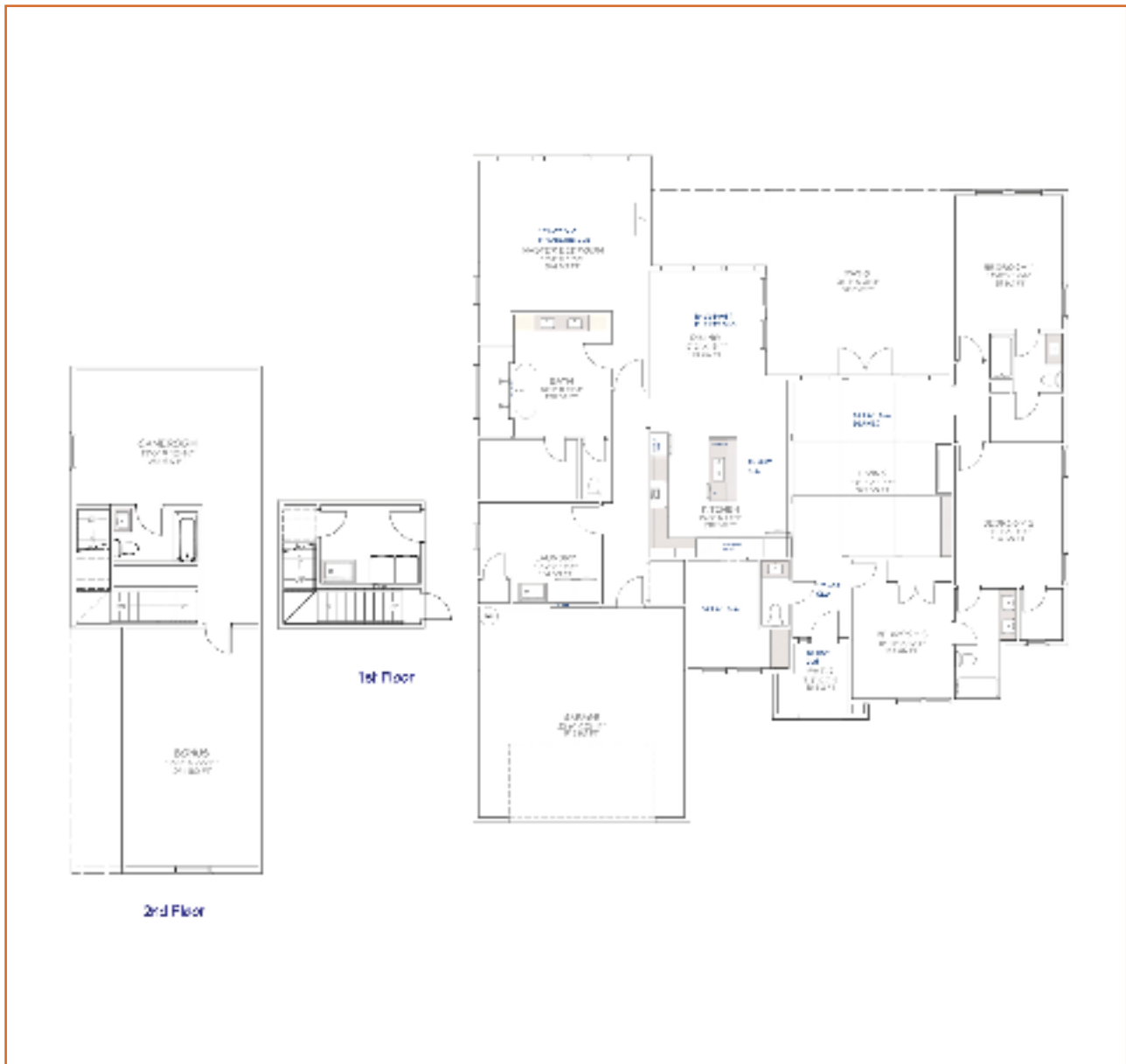
4 Bedrooms. 2.5 Bathrooms.
2722 sqft





THE PELLUM

4 Bedrooms. 3.5 Bathrooms.
2831 sqft





GREENCITY VALUES

A PASSION FOR BLESSING
PEOPLE IN EVERYTHING WE DO

Our values are humility, hard work, and honesty. Our team members share these values to build up and impact culture as we develop vibrant communities to bless lives.

People In Our Purpose - Humility That Puts Others First

Our company sees the people behind every contract and every order and seeks to enrich the lives of the people we work with. We value humility and putting other people first in all we do.

Excellence in Our Product - Hard Work That is Results Driven

We understand that a reputation is built over time and can be ruined overnight. We want our customers to reinforce the reputation of quality and timeliness with Greencity. We commit to exceeding people's expectations with hard work and continual improvement. At Greencity, excellence is a way of life.

Integrity in Our Practice - Honesty That Gains People's Trust

We work with a focus on long-term, sustainable results and seek to cultivate trustworthy and lasting relationships with all the people we work with. Honesty, transparency, and authenticity are principles that we hold to and operate under.





SALES TEAM



COMMUNITY SALES:

Julia Pipenko

864-399-7774
sales@greencityhomes.us



COMMUNITY SALES:

Wendi Hinson

864-399-7774
sales@greencityhomes.us



PREFERRED LENDER:

Derek Horton

Southern First Bank
864-497-1519
dhorton@southernfirst.com



PREFERRED ATTORNEY:

Steve Hammett

Blair Cato - Spartanburg
864-597-0300
steve@blaircato.com



VISIT US TODAY



INNOVA
ESTATES

I N N O V A E S T A T E S

COMING SPRING 2024

Address : 794 Clark Road Inman SC 29349
Website : www.modernInman.com

